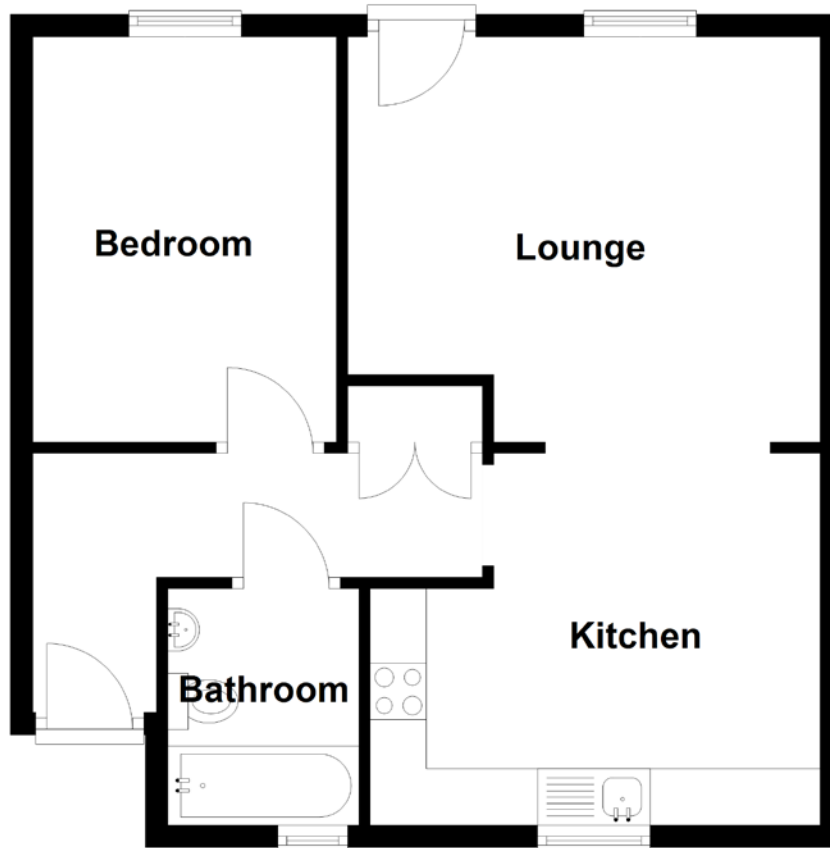


FLOOR PLAN, DIMENSIONS & MAP



Approximate Dimensions
(Taken from the widest point)

Lounge
Kitchen

4.20m (13'9") x 3.60m (11'10")
4.00m (13'1") x 3.30m (10'10")

Bedroom
Bathroom

Gross internal floor area (m²): 51m²
EPC Rating: D

3.60m (11'10") x 2.70m (8'10")
2.10m (6'11") x 1.70m (5'7")

