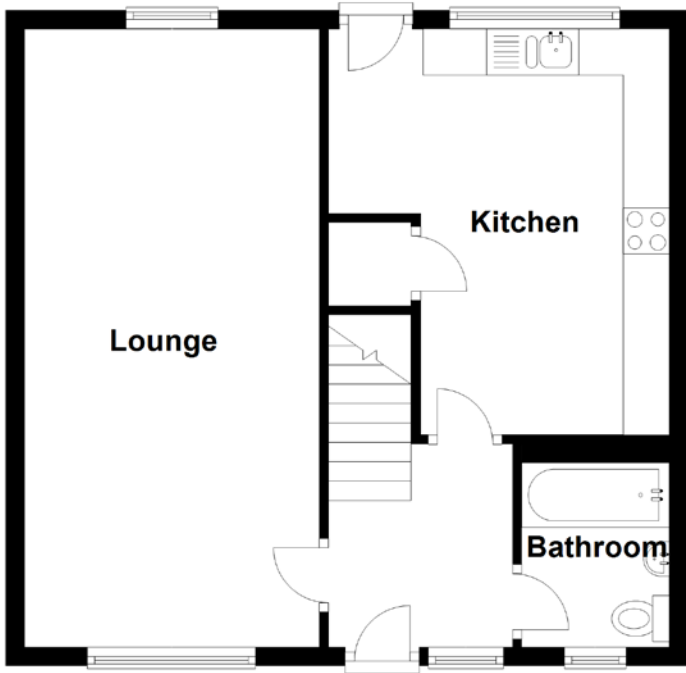


FLOOR PLAN, DIMENSIONS & MAP



Approximate Dimensions
(Taken from the widest point)

Lounge 6.70m (22') x 3.20m (10'6")
Kitchen 4.40m (14'5") x 2.70m (8'10")
Bathroom 2.20m (7'3") x 1.60m (5'3")

Bedroom 1 5.80m (19') x 3.20m (10'6")
Bedroom 2 3.30m (10'10") x 2.70m (8'10")
Bedroom 3 3.30m (10'10") x 2.80m (9'2")

Gross internal floor area (m²): 97m²
EPC Rating: D

