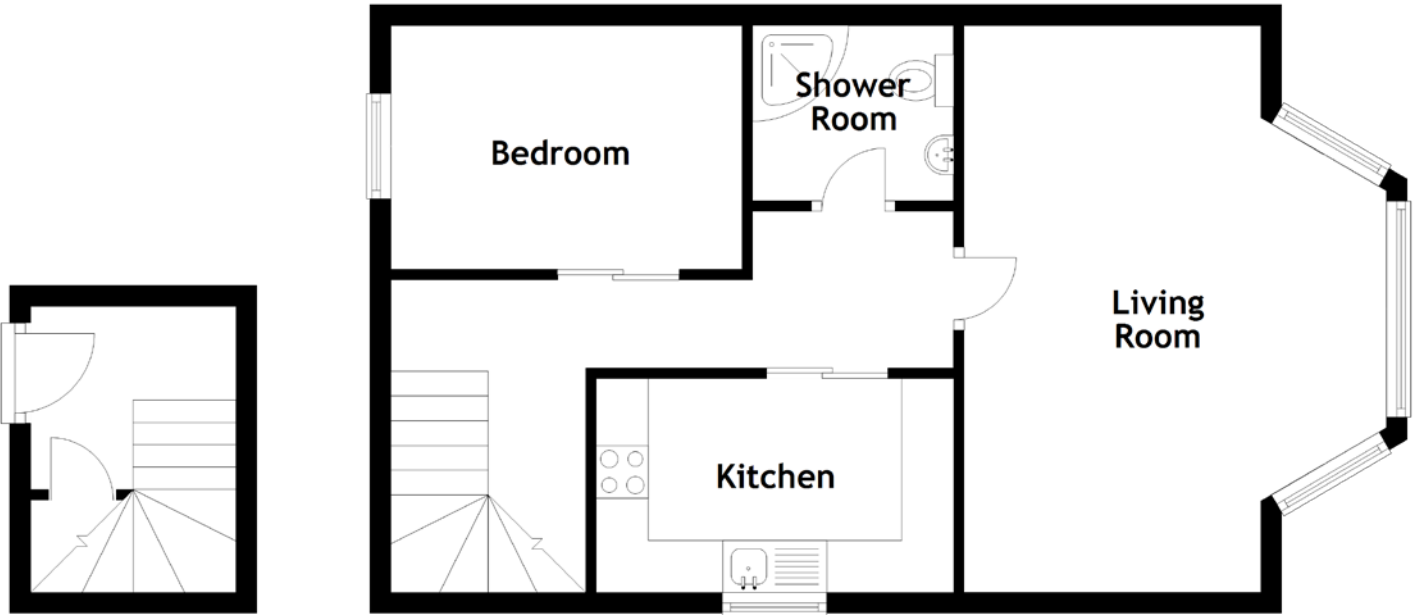


FLOOR PLAN, DIMENSIONS & MAP



Approximate Dimensions
(Taken from the widest point)

Living Room
Kitchen

5.43m (17'10") x 4.05m (13'3")
3.43m (11'3") x 2.05m (6'9")

Bedroom
Shower Room

3.37m (11'1") x 2.34m (7'8")
1.93m (6'4") x 1.68m (5'6")

Gross internal floor area (m²): 49m²
EPC Rating: C

