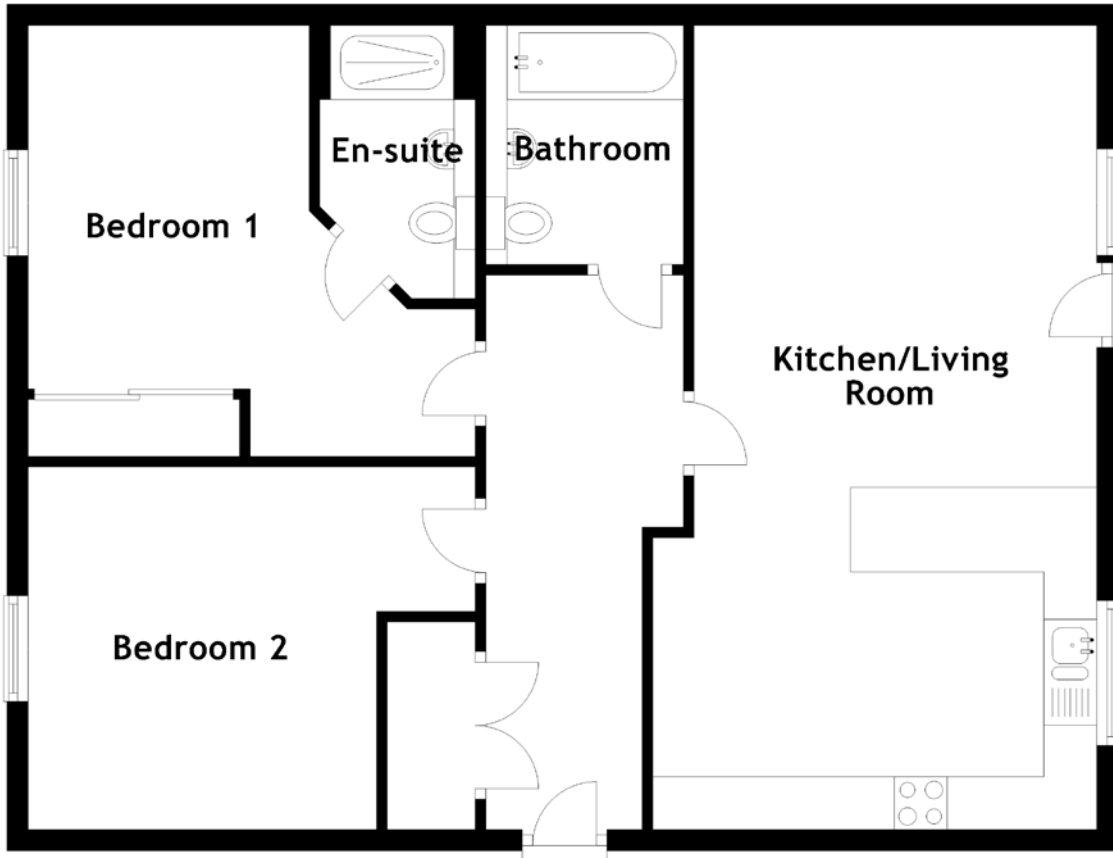


# FLOOR PLAN, DIMENSIONS & MAP



Approximate Dimensions (Taken from the widest point)

Kitchen/Living Room 7.60m (24'11") x 4.20m (13'9")  
 Bedroom 1 4.23m (13'11") x 4.07m (13'4")  
 En-suite 2.58m (8'6") x 1.47m (4'10")

Bedroom 2 4.23m (13'11") x 3.43m (11'3")  
 Bathroom 2.26m (7'5") x 1.87m (6'2")

Gross internal floor area (m<sup>2</sup>): 75m<sup>2</sup>  
 EPC Rating: B

