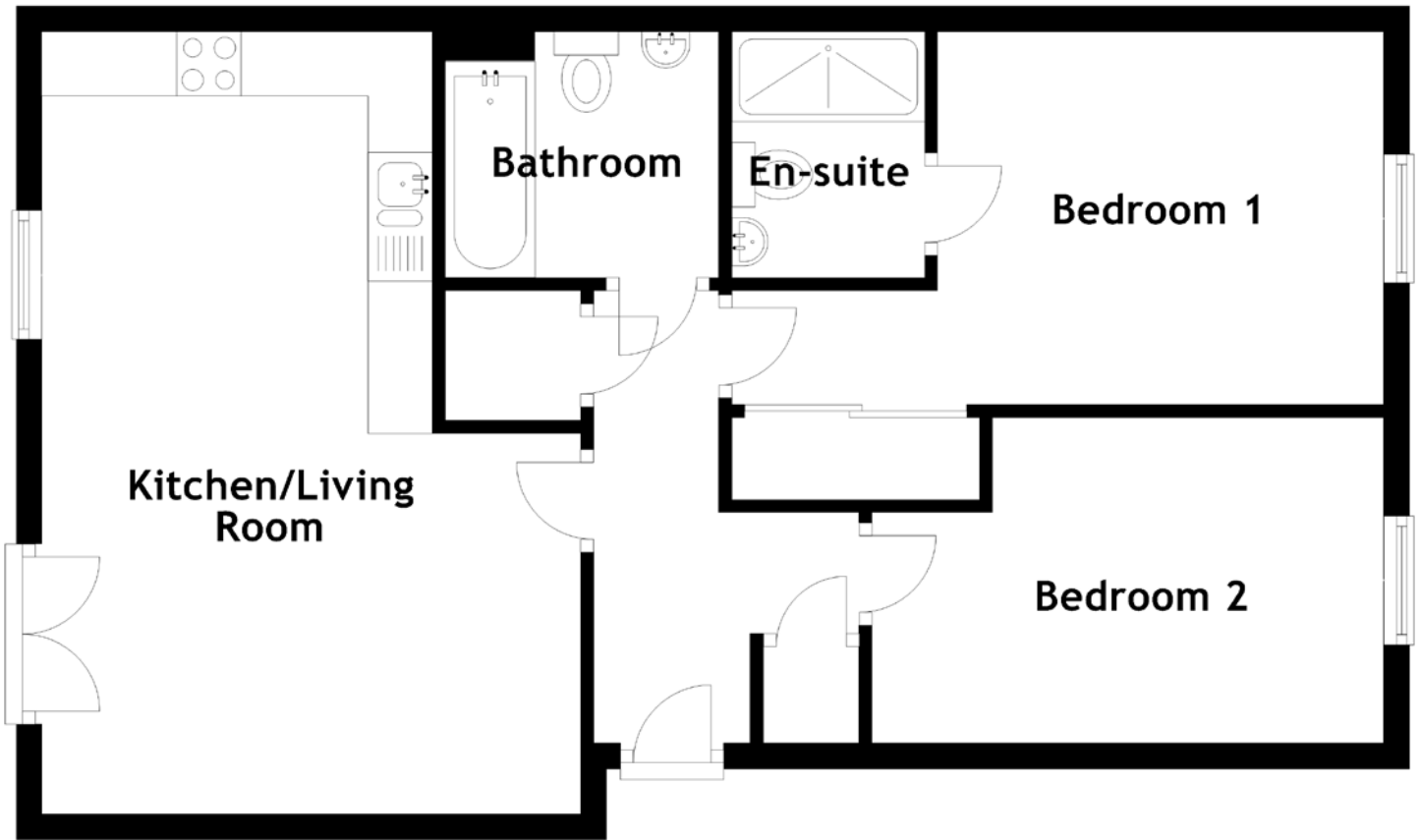


# FLOOR PLAN, DIMENSIONS & MAP



Approximate Dimensions  
(Taken from the widest point)

Kitchen/Living Room 6.08m (19'11") x 4.19m (13'9")  
Bathroom 2.13m (7') x 1.91m (6'3")

Bedroom 1 4.97m (16'3") x 2.90m (9'6")  
En-suite 1.91m (6'3") x 1.50m (4'11")  
Bedroom 2 3.98m (13'1") x 2.53m (8'4")

Gross internal floor area (m<sup>2</sup>): 62m<sup>2</sup> | EPC Rating: B

