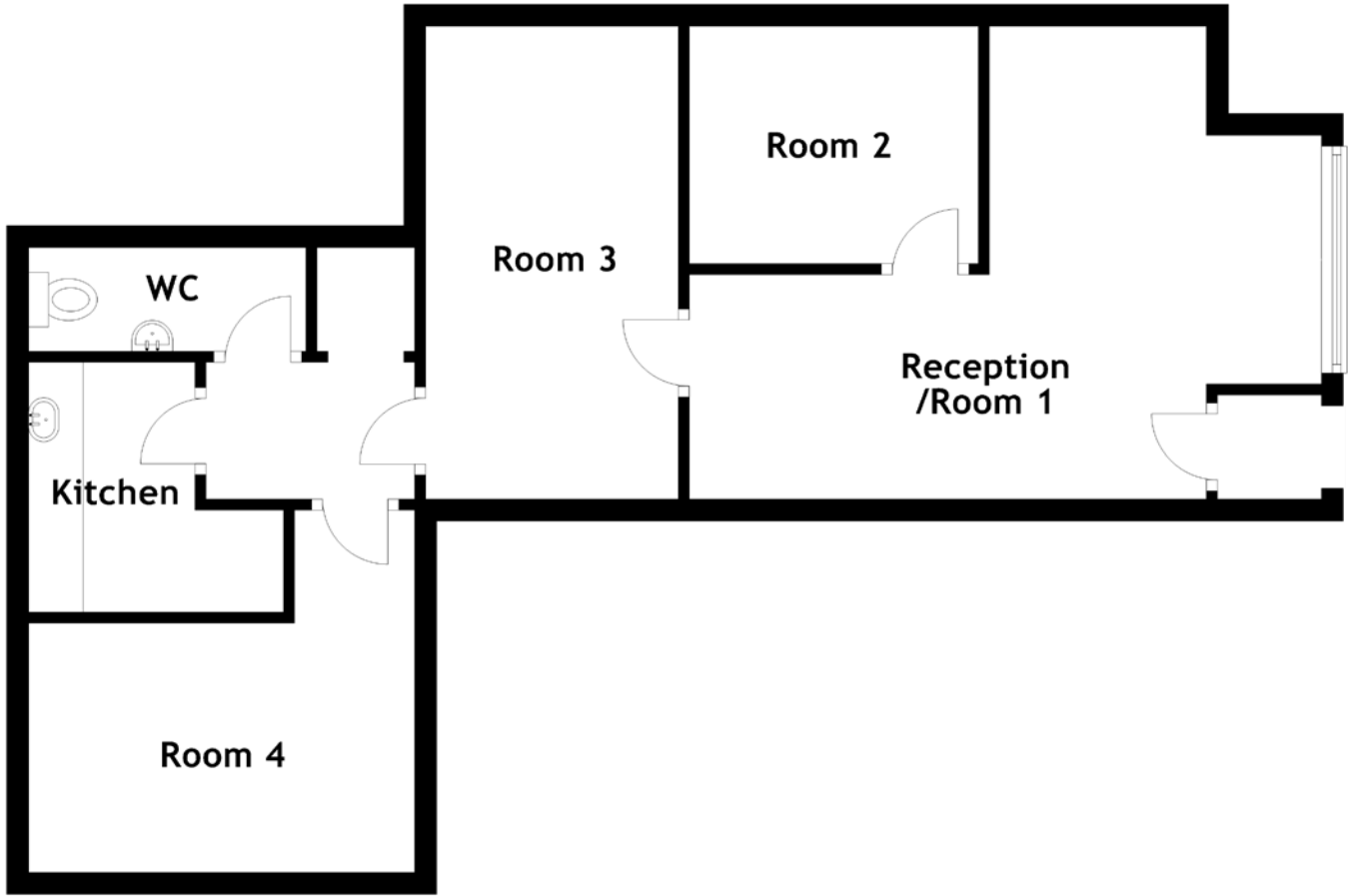


FLOOR PLAN, DIMENSIONS & MAP



Approximate Dimensions (Taken from the widest point)

Room 1 5.77m (18'11") x 4.32m (14'2")
 Room 2 2.64m (8'8") x 2.17m (7'1")

Room 3 4.32m (14'2") x 2.30m (7'7")
 Room 4 3.57m (11'9") x 3.31m (10'10")
 Kitchen 2.33m (7'8") x 2.28m (7'6")
 WC 2.53m (8'4") x 0.95m (3'1")

