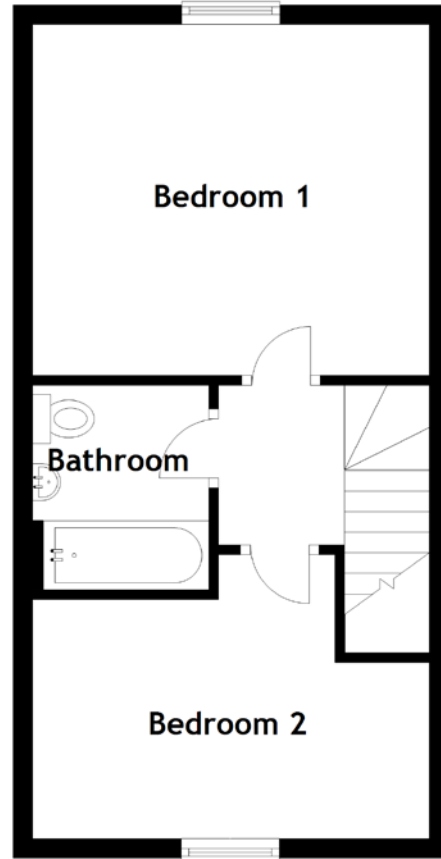
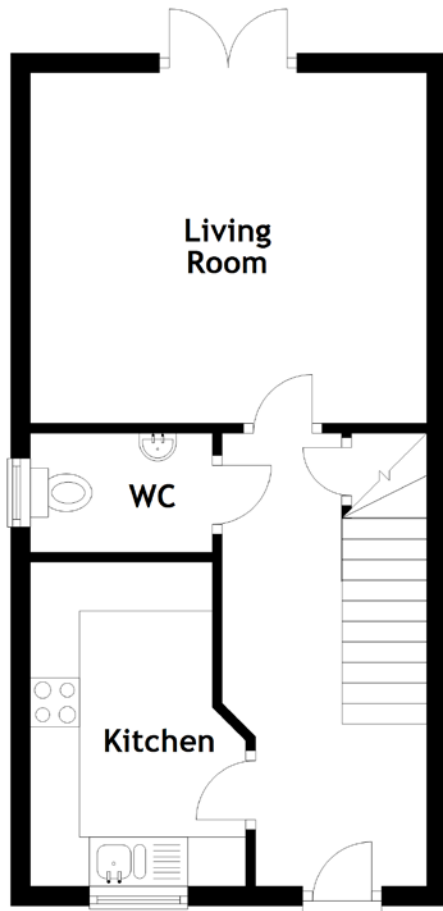


# FLOOR PLAN, DIMENSIONS & MAP



Approximate Dimensions  
(Taken from the widest point)

Living Room 4.03m (13'3") x 3.57m (11'9")  
 Kitchen 3.30m (10'10") x 2.19m (7'2")  
 WC 1.85m (6'1") x 1.21m (4')

Bedroom 1 4.03m (13'3") x 3.60m (11'10")  
 Bedroom 2 4.03m (13'3") x 2.89m (9'6")  
 Bathroom 2.08m (6'10") x 1.79m (5'10")

Gross internal floor area (m<sup>2</sup>): 66m<sup>2</sup>  
 EPC Rating: B

