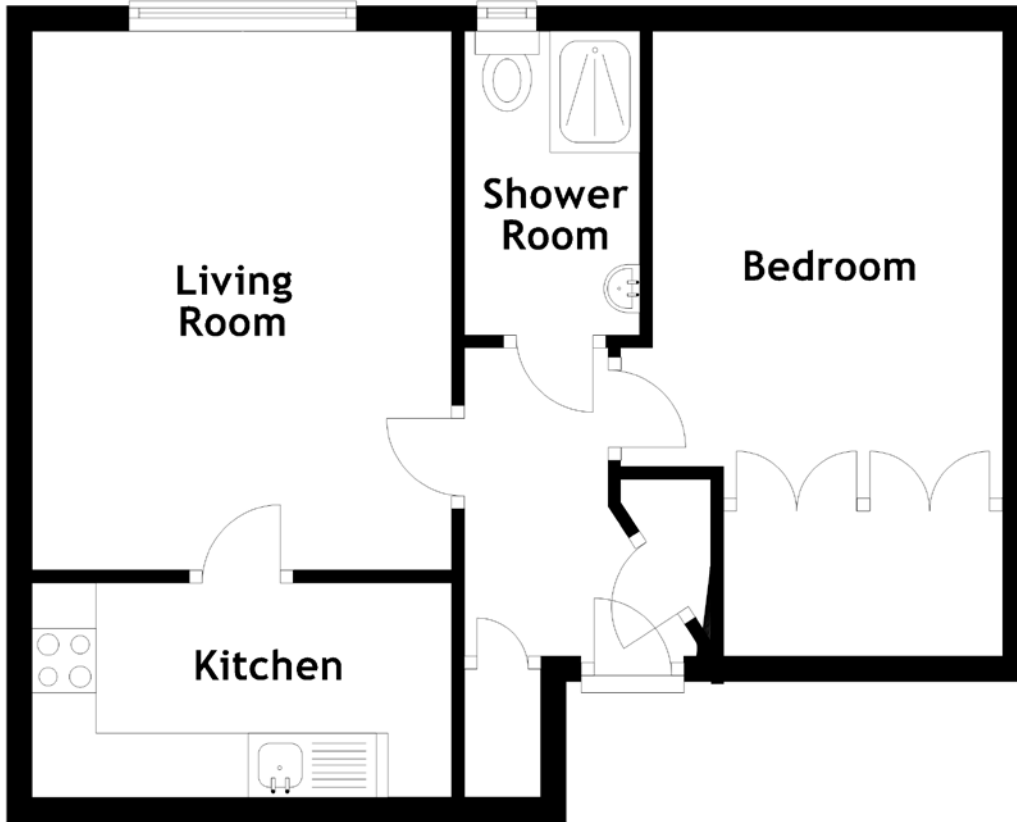


FLOOR PLAN, DIMENSIONS & MAP



Approximate Dimensions
(Taken from the widest point)

Living Room 4.20m (13'9") x 3.27m (10'9")
Kitchen 3.27m (10'9") x 1.67m (5'6")

Shower Room 2.37m (7'9") x 1.37m (4'6")
Bedroom 3.64m (11'11") x 2.18m (7'2")

Gross internal floor area (m²): 42m²
EPC Rating: D

