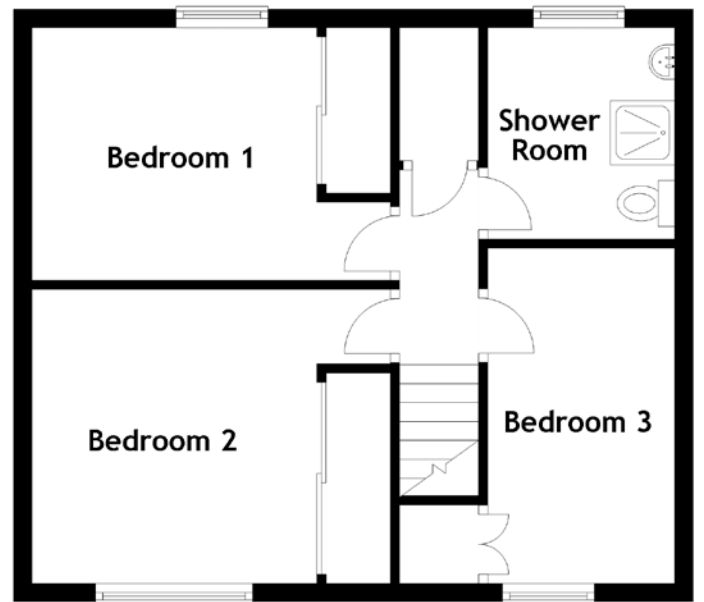
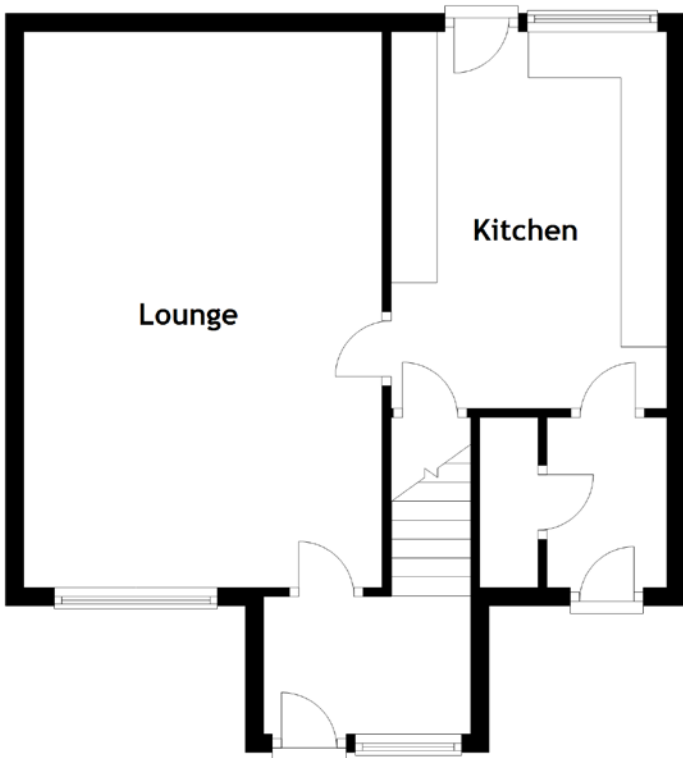


FLOOR PLAN, DIMENSIONS & MAP



Approximate Dimensions (Taken from the widest point)

Lounge 6.05m (19'10") x 3.90m (12'10")
 Kitchen 4.10m (13'5") x 3.00m (9'10")
 Shower Room 2.35m (7'9") x 2.05m (6'9")

Bedroom 1 3.95m (13') x 2.75m (9')
 Bedroom 2 3.95m (12'11") x 3.30m (10'10")
 Bedroom 3 3.65m (12') x 2.05m (6'9")

Gross internal floor area (m²): 89m² | EPC Rating: C

