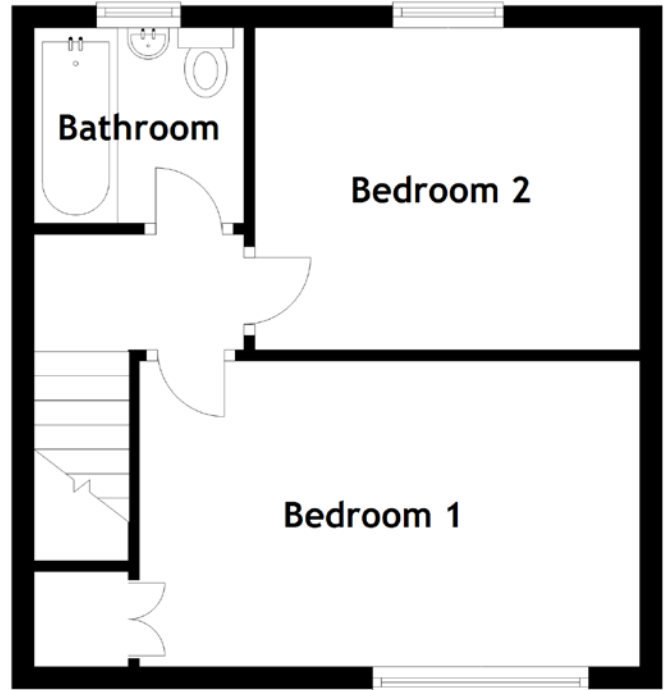
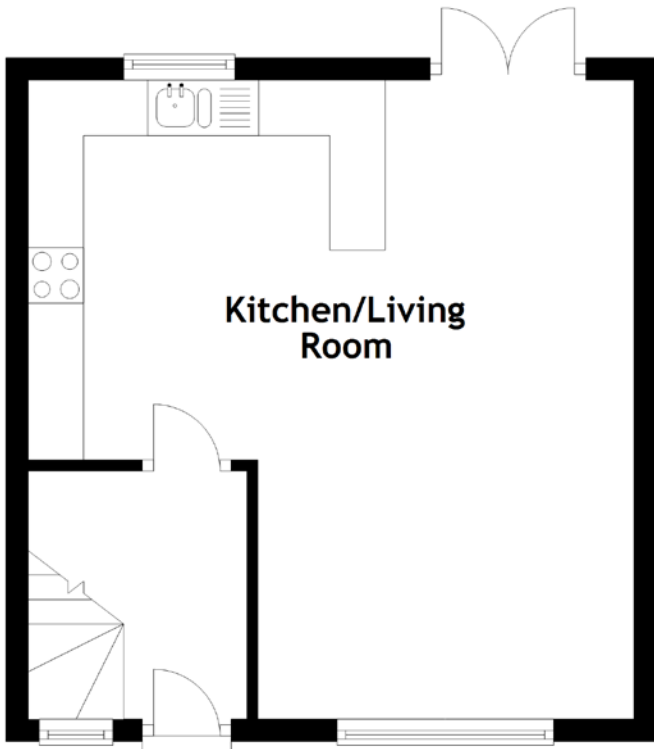


FLOOR PLAN, DIMENSIONS & MAP



Approximate Dimensions
(Taken from the widest point)

Kitchen/Living Room 5.75m (18'10") x 5.46m (17'11")
Bathroom 1.95m (6'5") x 1.76m (5'9")

Bedroom 1 4.51m (14'10") x 2.76m (9'1")
Bedroom 2 3.47m (11'5") x 2.90m (9'6")

Gross internal floor area (m²): 63m²
EPC Rating: C

