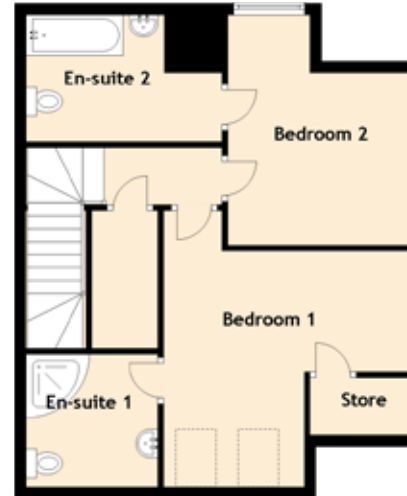
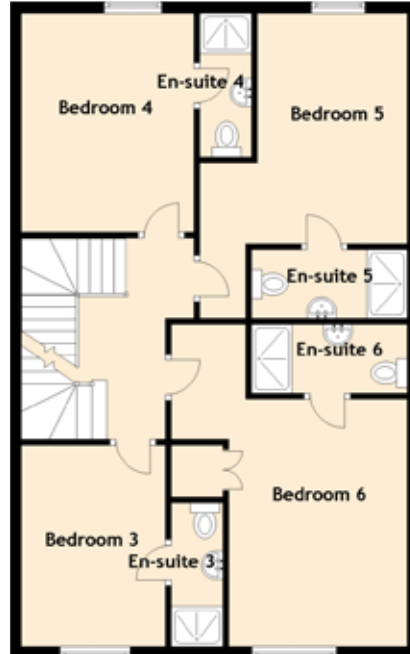
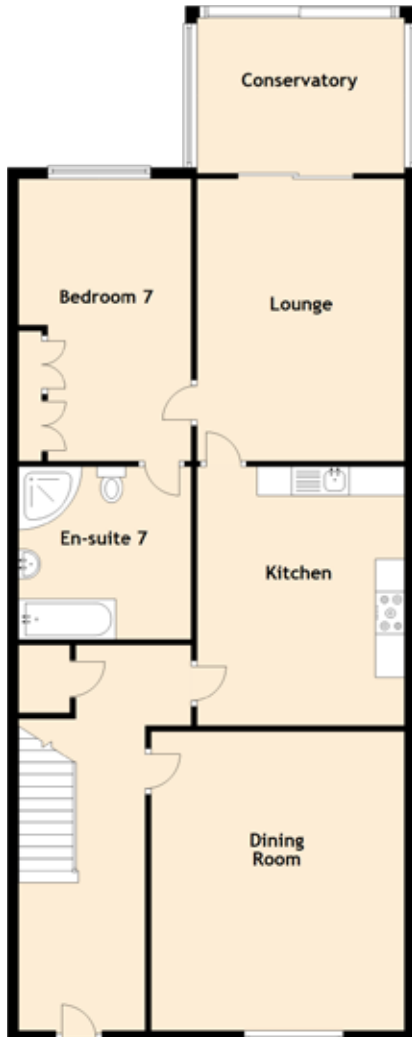


Forth Guest House

Approximate Dimensions
(Taken from the widest point)



Ground Floor	
Dining Room	5.20m (17'1") x 4.40m (14'5")
Lounge	4.80m (15'9") x 3.50m (11'6")
Kitchen	4.50m (14'9") x 3.60m (11'10")
Bedroom 7	4.90m (16'1") x 2.70m (8'10")
En-suite 7	2.90m (9'6") x 2.70m (8'10")
Conservatory	3.50m (11'6") x 2.70m (8'10")

First Floor	
Bedroom 3	3.50m (11'6") x 2.50m (8'2")
En-suite 3	2.50m (8'2") x 0.90m (2'11")
Bedroom 4	3.80m (12'6") x 3.00m (9'10")
En-suite 4	2.50m (8'2") x 0.90m (2'11")
Bedroom 5	4.00m (13'1") x 3.60m (11'10")
En-suite 5	2.70m (8'10") x 1.00m (3'3")
Bedroom 6	4.30m (14'1") x 3.10m (10'2")
En-suite 6	2.75m (9') x 1.10m (3'7")

Second Floor	
Bedroom 1	4.80m (15'9") x 4.60m (15'1")
En-suite 1	2.40m (7'10") x 2.00m (6'7")
Bedroom 2	4.00m (13'1") x 3.22m (10'7")
En-suite 2	3.40m (11'2") x 2.20m (7'3")

Extras (Included in the sale):
Will be discussed at formal offer.