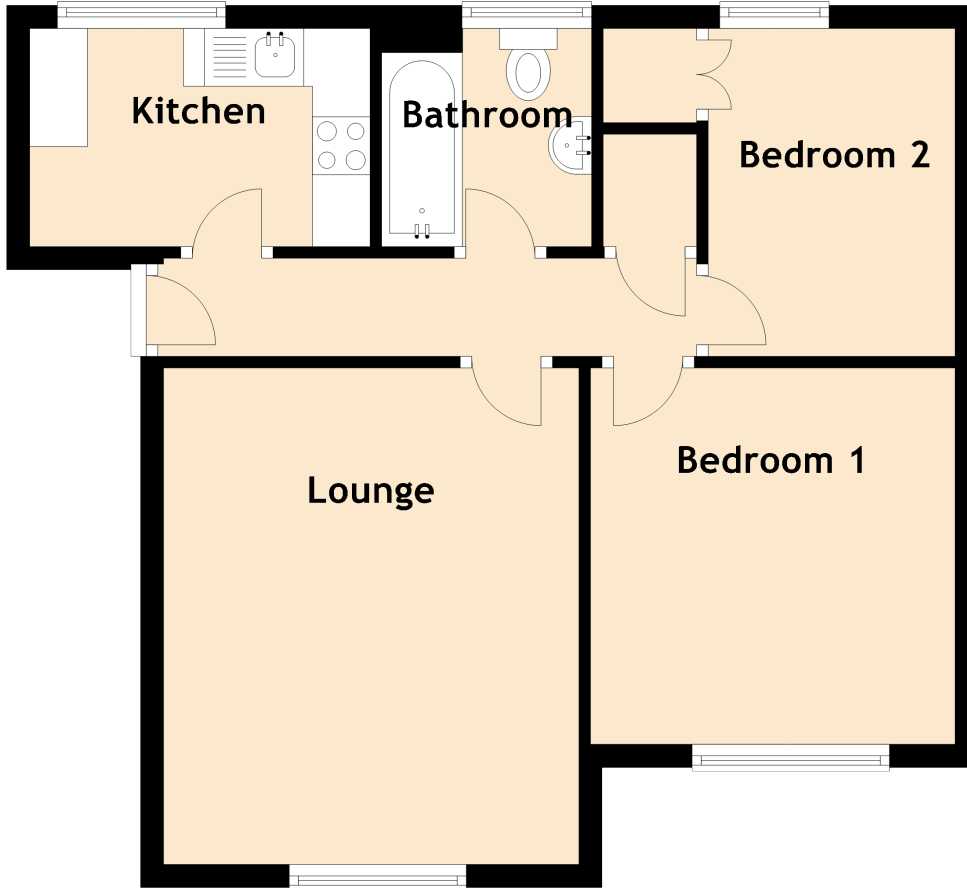


4/5 Tytler Gardens

ABBYHILL, EDINBURGH, EH8 8HQ



Approximate Dimensions (Taken from the widest point)

Lounge	4.30m (14'1") x 3.60m (11'10")
Kitchen	2.95m (9'8") x 1.90m (6'3")
Bedroom 1	3.26m (10'8") x 3.16m (10'4")
Bedroom 2	2.84m (9'4") x 2.14m (7')
Bathroom	1.89m (6'2") x 1.82m (6')

Gross internal floor area (m²): 51m² | EPC Rating: C