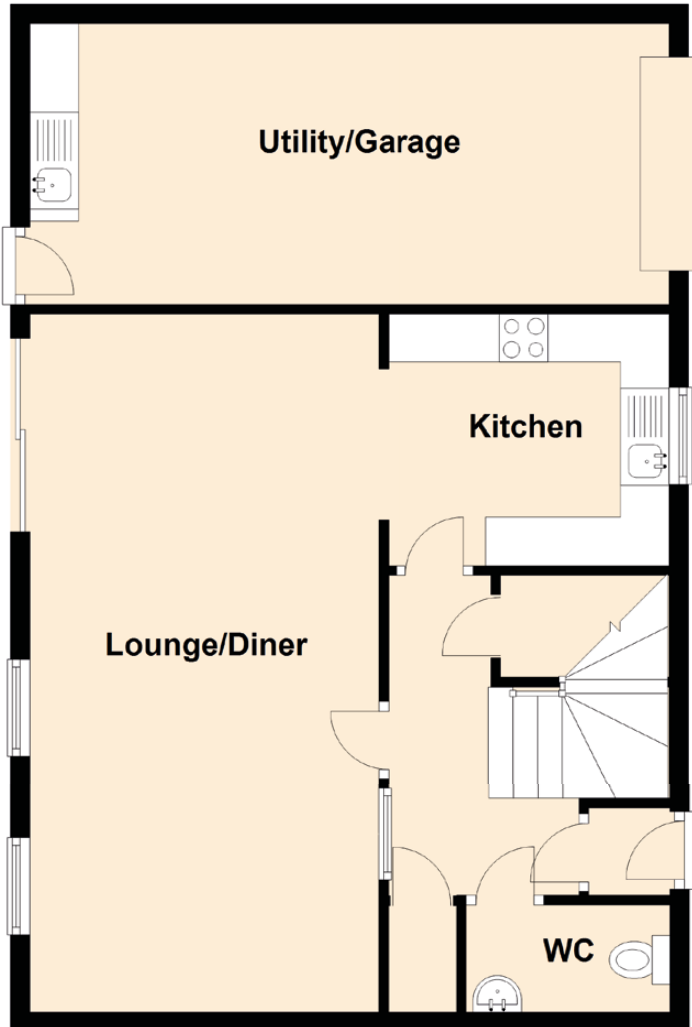


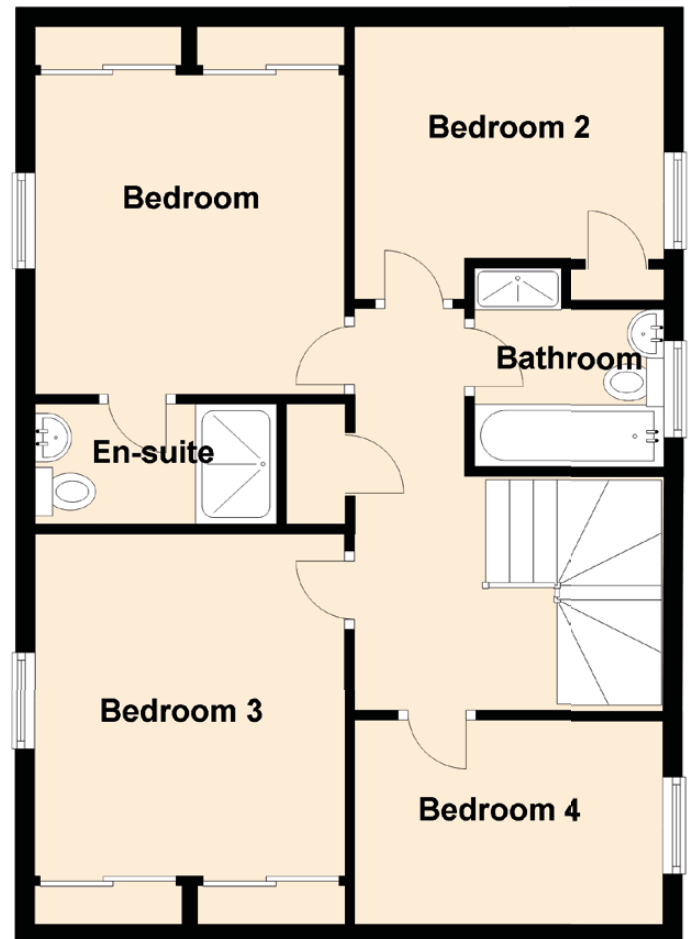
7 Hollybush Lane

PORT GLASGOW, RENFREWSHIRE, PA14 6QZ

Ground Floor



First Floor



Approximate Dimensions (Taken from the widest point)

Ground Floor

Lounge/Diner	7.20m (23'7") x 3.50m (11'6")
Kitchen	2.90m (9'6") x 2.60m (8'6")
WC	2.10m (6'11") x 0.90m (2'11")
Utility/Garage	6.60m (21'8") x 2.90m (9'6")

First Floor

Bedroom 1	3.80m (12'6") x 3.20m (10'6")
En-suite	2.50m (8'2") x 1.50m (4'11")
Bedroom 2	3.20m (10'6") x 2.40m (7'10")
Bedroom 3	3.80m (12'6") x 3.20m (10'6")
Bedroom 4	3.00m (9'10") x 2.10m (6'11")
Bathroom	2.40m (7'10") x 1.97m (6'5")

Gross internal floor area (m²): 115m²