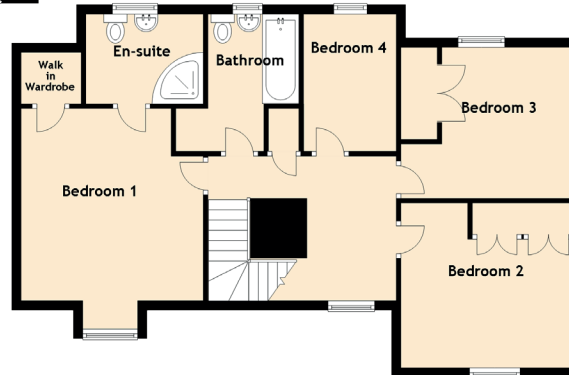
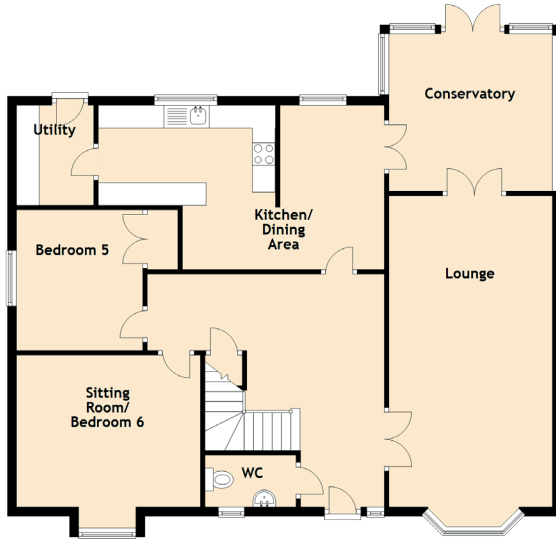


7 Toll House Grove

TRANENT, EAST LoTHIAN, EH33 2QR



Approximate Dimensions
(Taken from the widest point)

Lounge	6.80m (22'4") x 3.79m (12'5")
Kitchen/ Dining Area	6.30m (20'8") x 3.61m (11'10")
Utility	2.20m (7'3") x 1.70m (5'7")
Conservatory	3.60m (11'10") x 3.20m (10'6")
Sitting Room/ Bedroom 6	4.05m (13'3") x 3.34m (10'11")
Bedroom 1	4.12m (13'6") x 3.91m (12'10")
Walk in Wardrobe	1.29m (4'3") x 1.10m (3'7")
En-suite	2.80m (9'2") x 2.12m (6'11")
Bedroom 2	3.70m (12'2") x 2.00m (6'7")
Bedroom 3	3.70m (12'2") x 2.93m (9'7")
Bedroom 4	3.04m (10') x 1.99m (6'6")
Bedroom 5	3.09m (10'2") x 2.78m (9'1")
Bathroom	2.94m (9'8") x 0.75m (2'6")
WC	2.15m (7'1") x 1.14m (3'9")