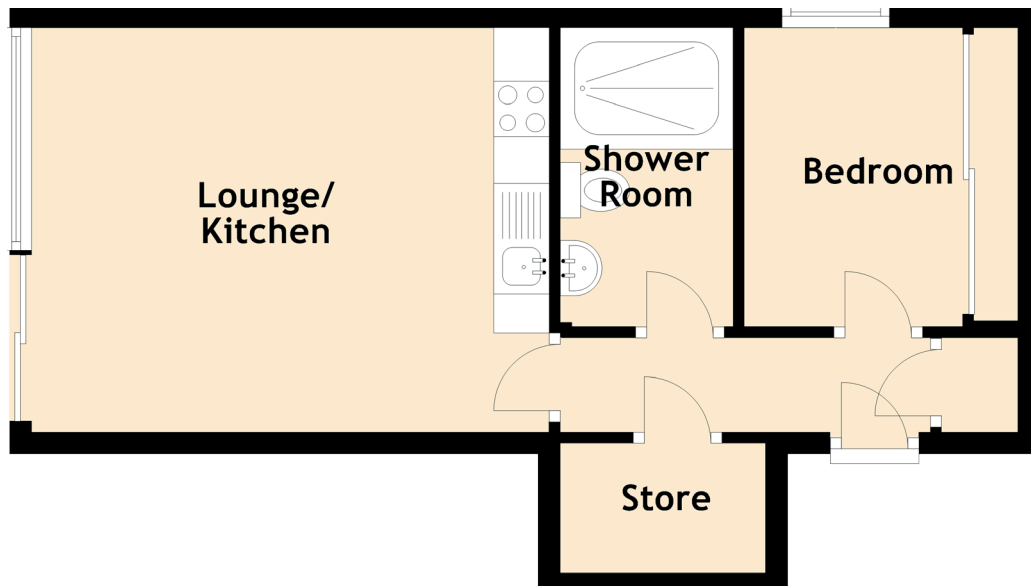


# 15/1 Simpson Loan

QUARTER MILE, EDINBURGH, EH3 9GB



Approximate Dimensions (Taken from the widest point)

Lounge/ Kitchen	4.67m (15'4") x 3.65m (12')
Bedroom	2.70m (8'10") x 2.47m (8'1")
Shower Room	2.70m (8'10") x 1.56m (5'1")