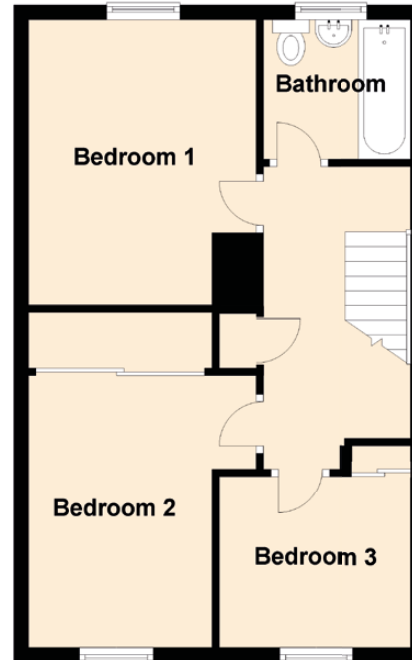
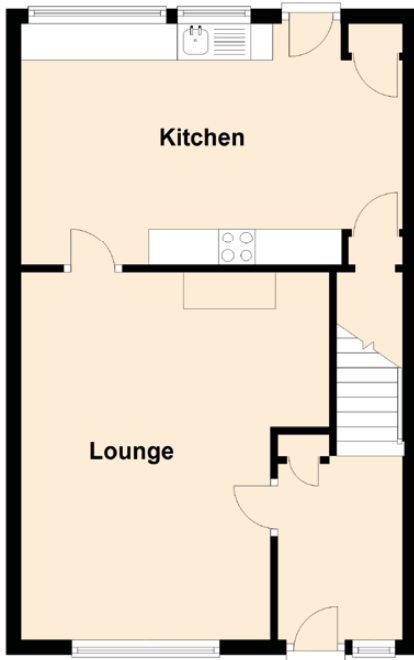


7 Graham Court

DUNDEE, ANGUS, DD4 9DF



Approximate Dimensions (Taken from the widest point)

Ground Floor

Lounge

5.00m (16'5") x 4.20m (13'9")

Kitchen

5.10m (16'9") x 3.30m (10'10")

First Floor

Bedroom 1

3.90m (12'10") x 3.10m (10'2")

Bedroom 2

3.70m (12'2") x 2.50m (8'2")

Bedroom 3

2.60m (8'6") x 2.40m (7'10")

Bathroom

1.90m (6'3") x 1.90m (6'3")