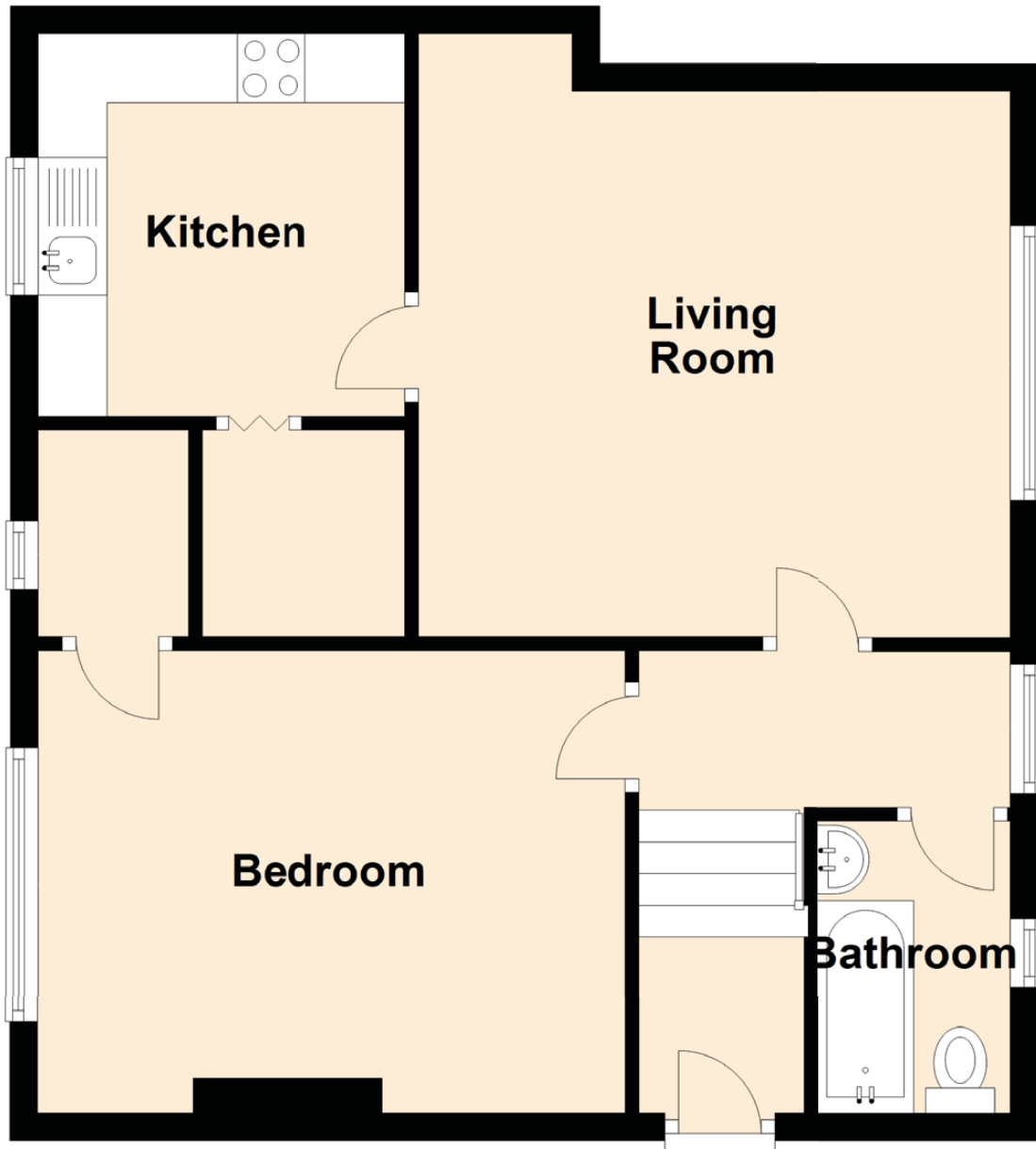


12 Shawburn Road

SELKIRK, TD7 4HW



Approximate Dimensions (Taken from the widest point)

Living Room	4.30m (14'1") x 3.97m (13')
Kitchen	2.78m (9'1") x 2.67m (8'9")
Bedroom	4.27m (14') x 3.36m (11')
Bathroom	2.17m (7'1") x 1.40m (4'7")

Gross internal floor area (m2): 52m²