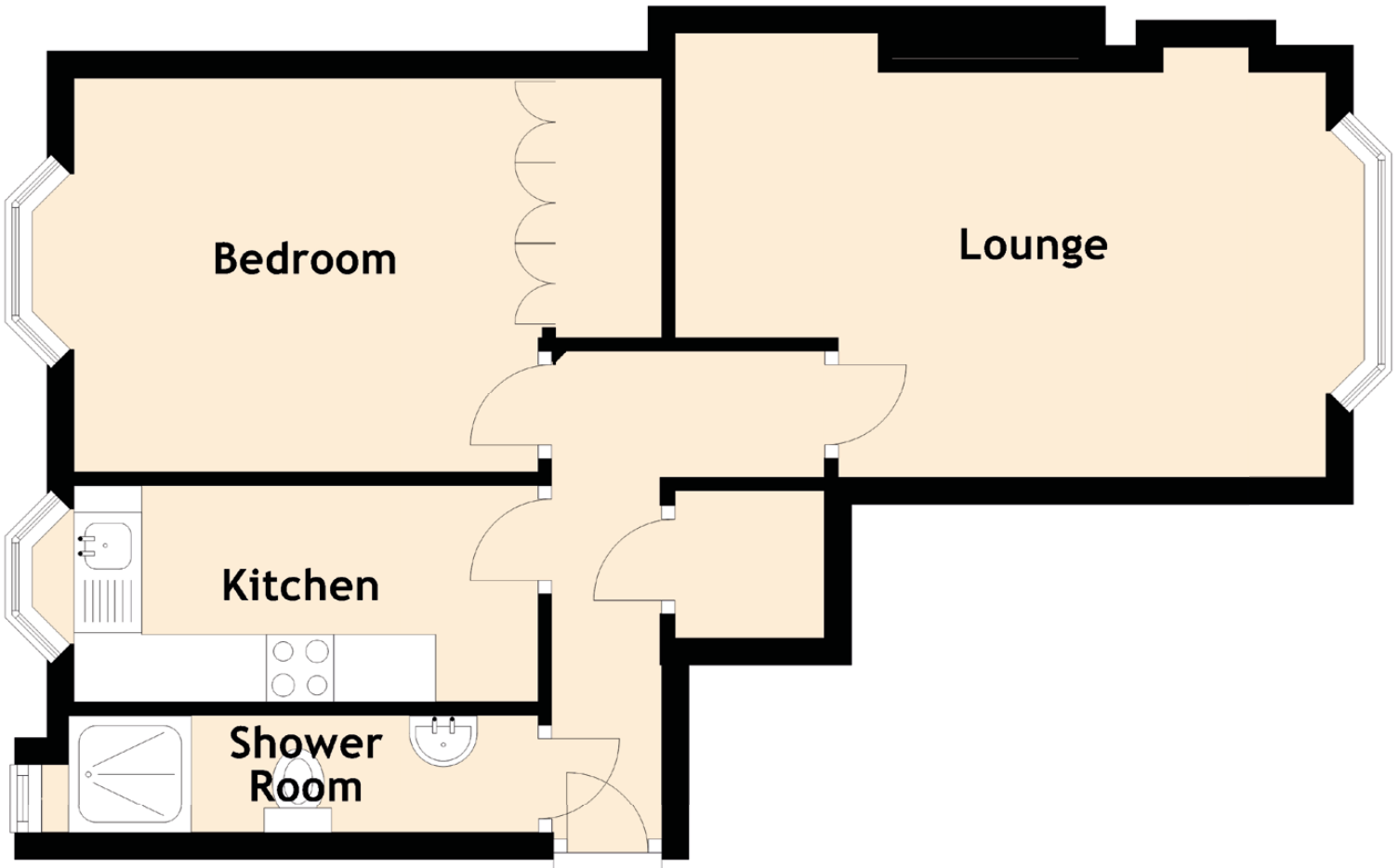


# 2F1, 4 Dalgety Avenue

MEADOWBANK, EDINBURGH, EH7 5UE



Approximate Dimensions (Taken from the widest point)

Lounge	4.82m (15'10") x 2.96m (9'5")
Kitchen	3.62m (11'11") x 1.60m (5'3")
Bedroom	3.47m (11'4") x 2.92m (9'7")
Shower Room	3.77m (12'4") x 0.87m (2'10")

Gross internal floor area (m<sup>2</sup>): 47m<sup>2</sup>