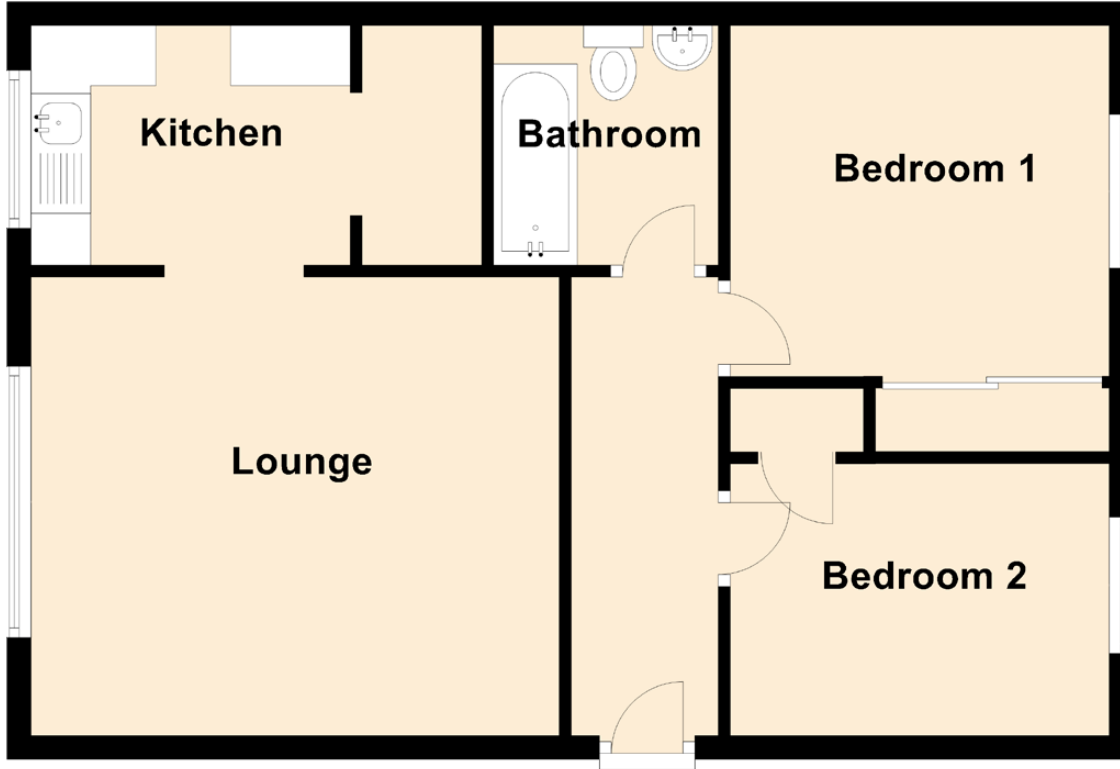


# 3/7 North Hillhousefield



Approximate Dimensions (Taken from the widest point)

Lounge	4.42m (14'6") x 3.83m (12'7")
Kitchen	2.67m (8'9") x 2.00m (6'7")
Bedroom 1	3.17m (10'5") x 2.93m (9'7")
Bedroom 2	3.17m (10'5") x 2.26m (7'5")
Bathroom	1.90m (6'3") x 1.88m (6'2")

Gross internal floor area (m<sup>2</sup>): 54m<sup>2</sup> | EPC Rating: C