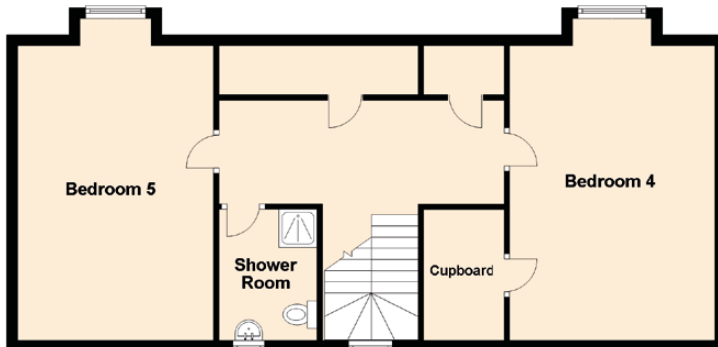
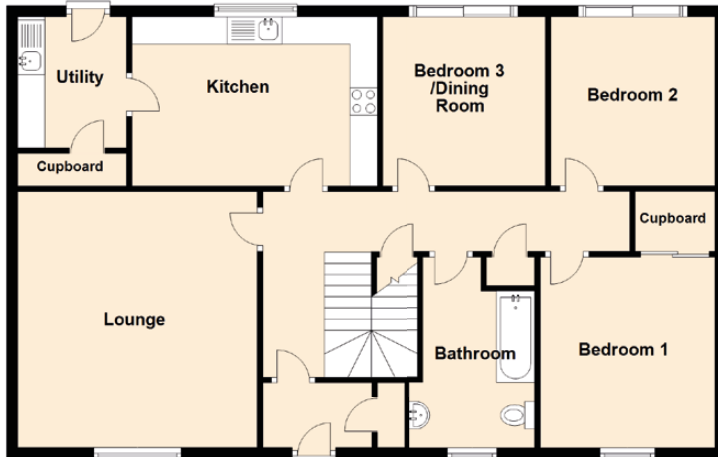


6 MacLeod Place

DINGWALL, HIGHLAND, IV15 9TZ



Approximate Dimensions (Taken from the widest point)

Lounge	4.70m (15'5") x 4.40m (14'5")
Kitchen	4.50m (14'9") x 3.10m (10'2")
Utility	2.40m (7'10") x 2.00m (6'7")
Bedroom 1	3.50m (11'6") x 3.20m (10'6")
Bedroom 2	3.10m (10'2") x 3.00m (9'10")
Bedroom 3/Dining Room	3.10m (10'2") x 3.00m (9'10")
Bedroom 4	5.40m (17'9") x 3.60m (11'10")
Bedroom 5	5.40m (17'9") x 3.60m (11'10")
Bathroom	3.50m (11'6") x 2.30m (7'7")
Shower Room	2.40m (7'11") x 1.80m (5'11")