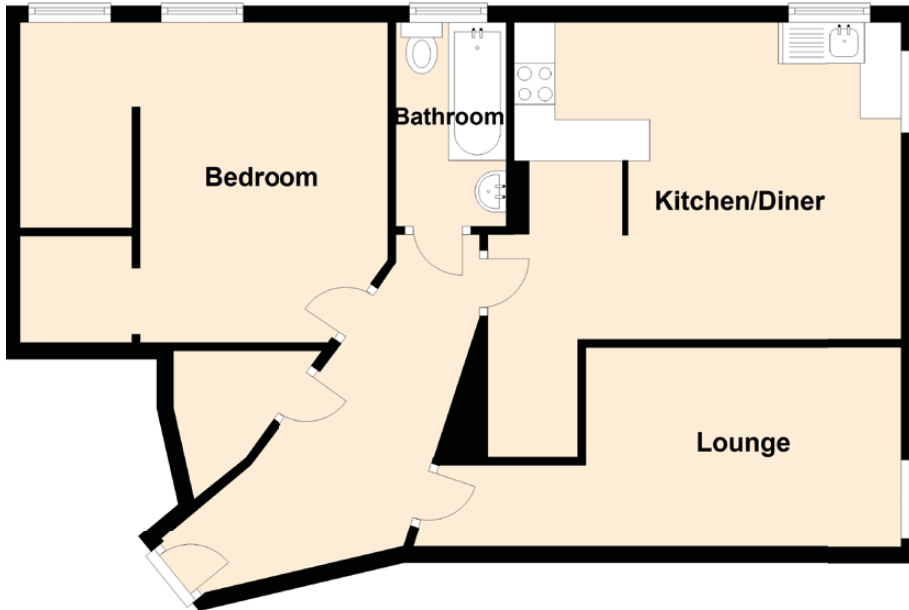


# 10/1F1 Dean Park Street

STOCKBRIDGE, EDINBURGH, EH4 1JW



Approximate Dimensions (Taken from the widest point)

Lounge	5.09m (16'8") x 2.43m (8')
Kitchen	4.72m (15'6") x 3.86m (12'8")
Bedroom	3.90m (12'10") x 3.03m (9'11")
Bathroom	2.48m (8'2") x 1.34m (4'5")