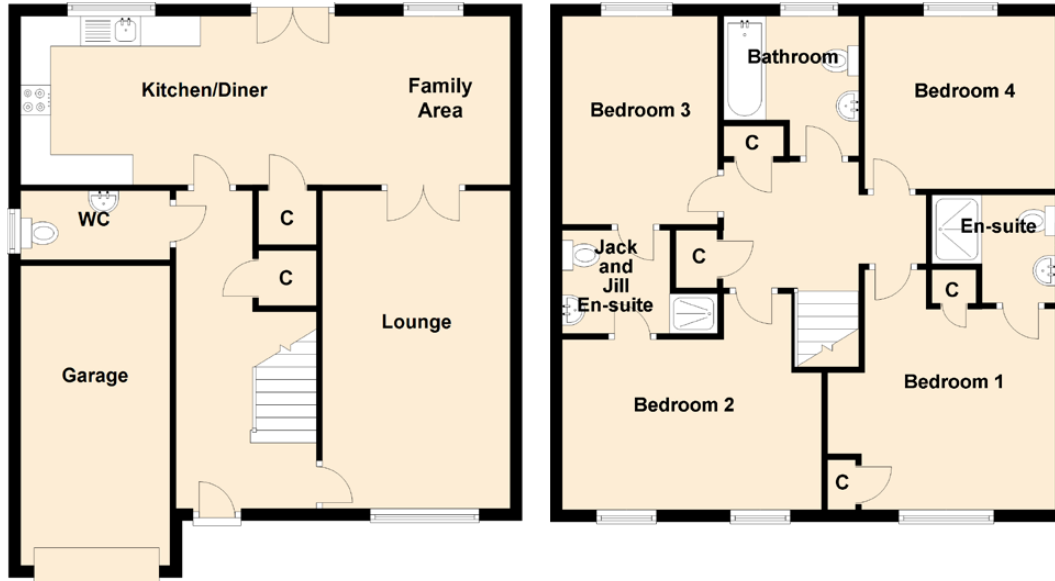


15 Macpherson Avenue



Approximate Dimensions (Taken from the widest point)

Kitchen/Diner	8.16m (26'9") x 2.81m (9'3")
Lounge	5.30m (17'5") x 3.13m (10'3")
Bedroom 1	4.00m (13'1") x 3.76m (12'4")
En-suite	2.06m (6'9") x 1.80m (5'11")
Bedroom 2	4.32m (14'2") x 3.60m (11'10")
Jack and Jill En-suite	1.79m (5'11") x 1.72m (5'8")
Bedroom 3	3.47m (11'5") x 2.59m (8'6")
Bedroom 4	3.18m (10'5") x 2.88m (9'5")
Bathroom	2.33m (7'8") x 2.25m (7'5")
WC	2.49m (8'2") x 1.15m (3'9")
Garage	5.00m (16'5") x 2.46m (8'1")

Gross internal floor area (m²): 125m²

EPC Rating: C