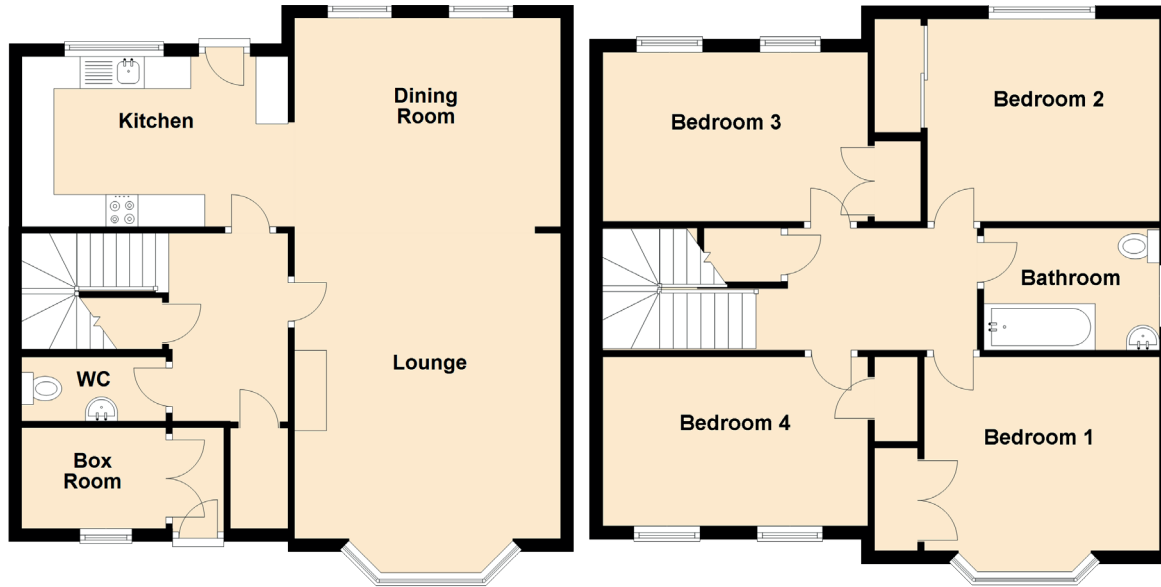


28 Bishop Avenue

LOCHGELLY, FIFE, KY5 9EA



Approximate Dimensions
(Taken from the widest point)

Lounge	5.20m (17'1") x 4.15m (13'7")
Dining Room	4.15m (13'7") x 3.25m (10'8")
Kitchen	4.15m (13'7") x 2.65m (8'8")
Box Room	2.25m (7'5") x 1.45m (4'9")
WC	2.25m (7'5") x 1.00m (3'3")
Bedroom 1	3.55m (11'8") x 3.55m (11'8")
Bedroom 2	3.55m (11'8") x 3.05m (10')
Bedroom 3	4.00m (13'1") x 2.55m (8'4")
Bedroom 4	4.00m (13'1") x 2.55m (8'4")
Bathroom	2.65m (8'8") x 1.75m (5'9")

Gross internal floor area (m²): TBCm²

EPC Rating: TBC