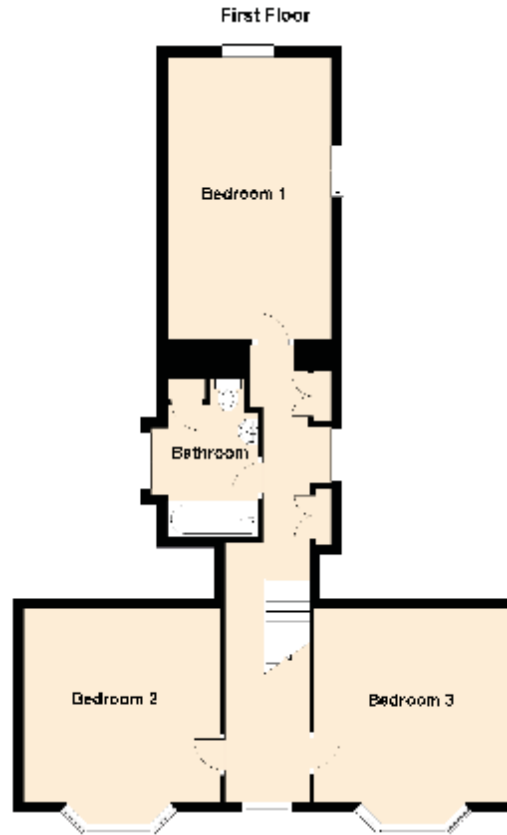
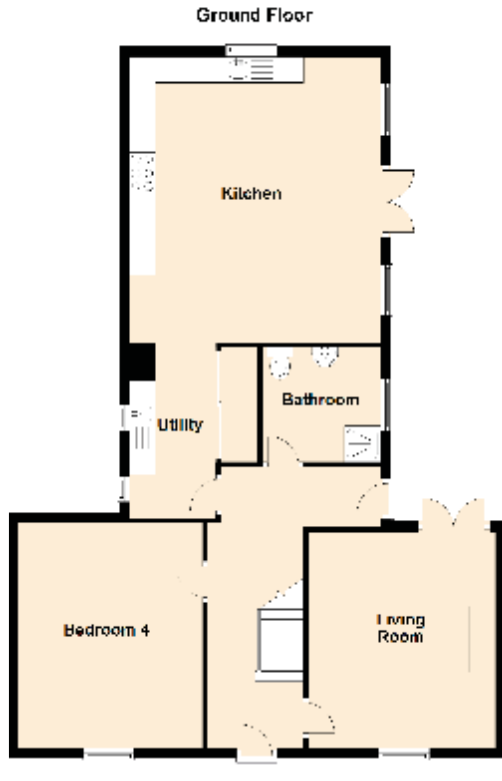


Burnside Cottage

CULROSS, DUNFERMLINE, KY12 8JN



Approximate Dimensions (Taken from the widest point)

Ground Floor

Living Room	4.40m (14'5") x 3.62m (11'11")
Kitchen	5.52m (18'1") x 4.86m (15'11")
Bedroom 4	4.35m (14'3") x 3.58m (11'9")
Utility	3.30m (10'10") x 1.68m (5'6")
Bathroom	2.29m (7'6") x 2.00m (6'7")

First Floor

Bedroom 1	5.46m (17'11") x 3.38m (11'1")
Bedroom 2	3.80m (12'6") x 3.75m (12'4")
Bedroom 3	3.80m (12'6") x 3.75m (12'4")
Bathroom	3.06m (10') x 2.08m (6'10")

Gross internal floor area (m²): 149m²