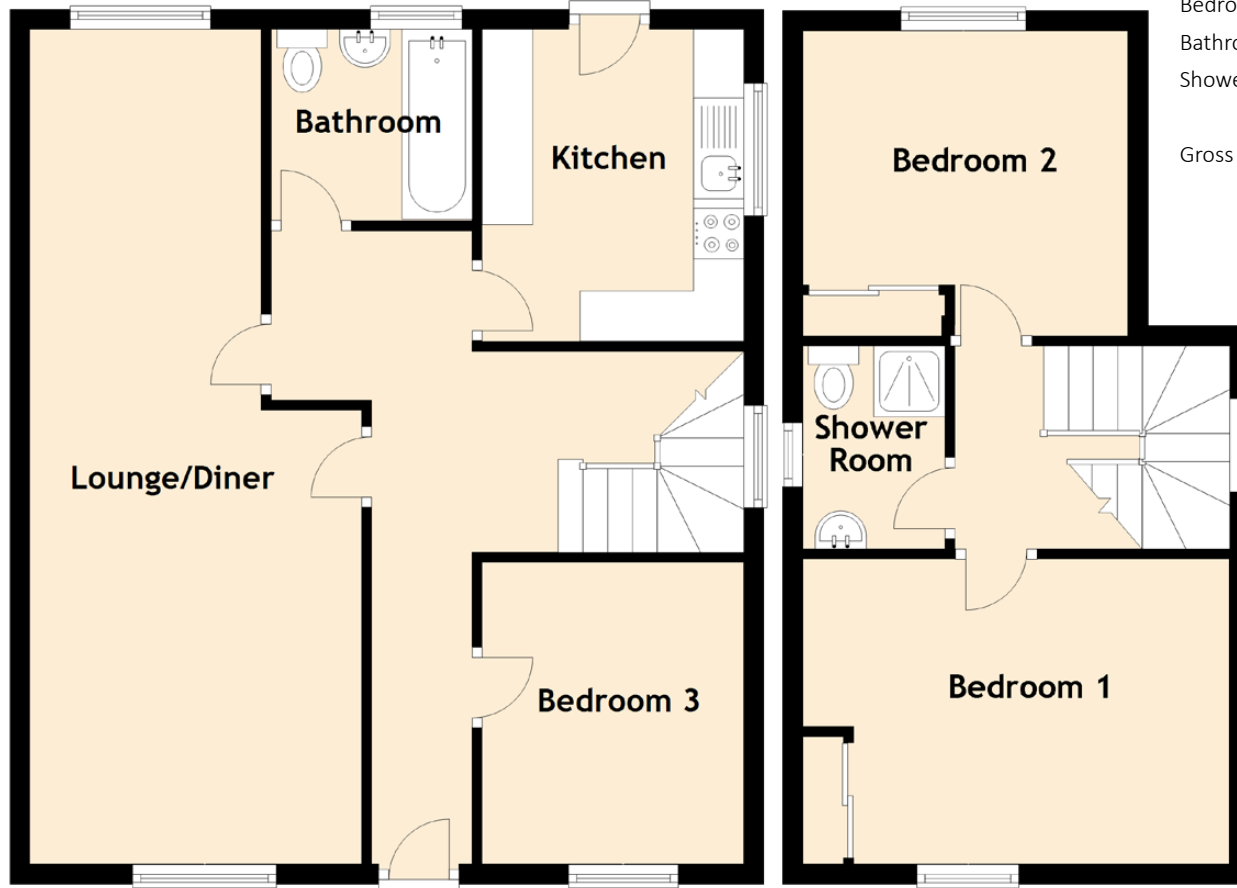


7 Angus Crescent

CRIEFF, PERTSHIRE, PH7 4LF



Approximate Dimensions (Taken from the widest point)

Lounge/Diner	8.30m (27'3") x 3.30m (10'10")
Kitchen	3.10m (10'2") x 2.40m (7'10")
Bedroom 1	4.20m (13'9") x 3.00m (9'10")
Bedroom 2	3.20m (10'6") x 3.00m (9'10")
Bedroom 3	3.00m (9'10") x 2.60m (8'6")
Bathroom	2.00m (6'7") x 1.90m (6'3")
Shower Room	2.00m (6'7") x 1.40m (4'7")

Gross internal floor area (m²): 85m² | EPC Rating: C