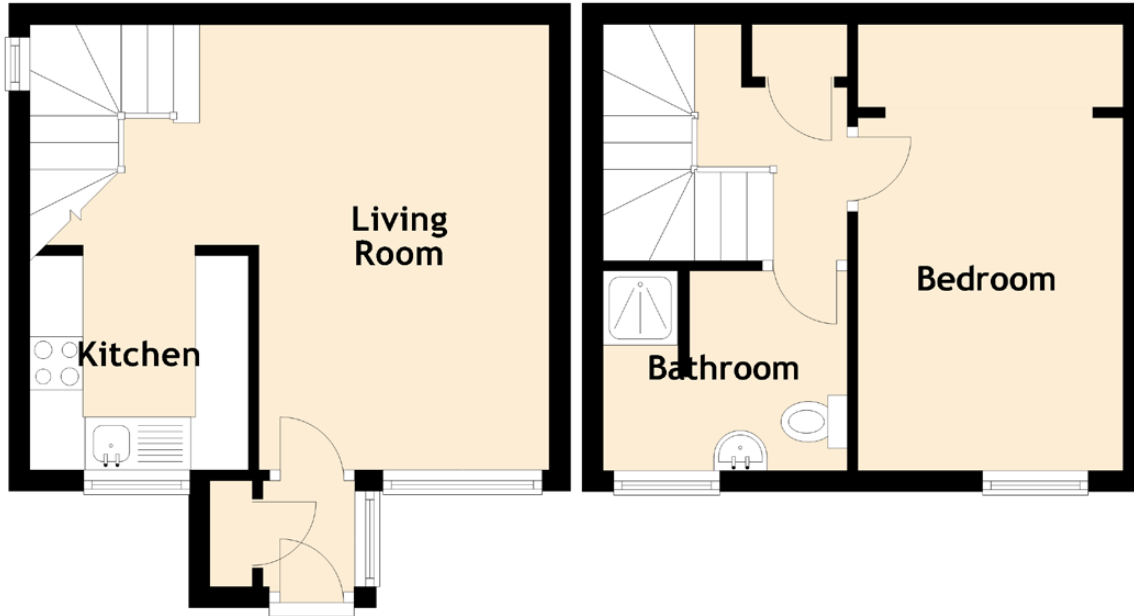


# 11 Alnwickhill Grove



Approximate Dimensions (Taken from the widest point)

Living Room	4.90m (16'1") x 4.20m (13'9")
Kitchen	2.06m (6'9") x 2.02m (6'8")
Bedroom	3.32m (10'11") x 2.50m (8'2")
Bathroom	2.30m (7'7") x 1.88m (6'2")

Gross internal floor area (m<sup>2</sup>): 41m<sup>2</sup> | EPC Rating: E

Extras (Included in the sale): All fixtures, fittings and floors coverings. Please note that other items may be available through separate negotiation.