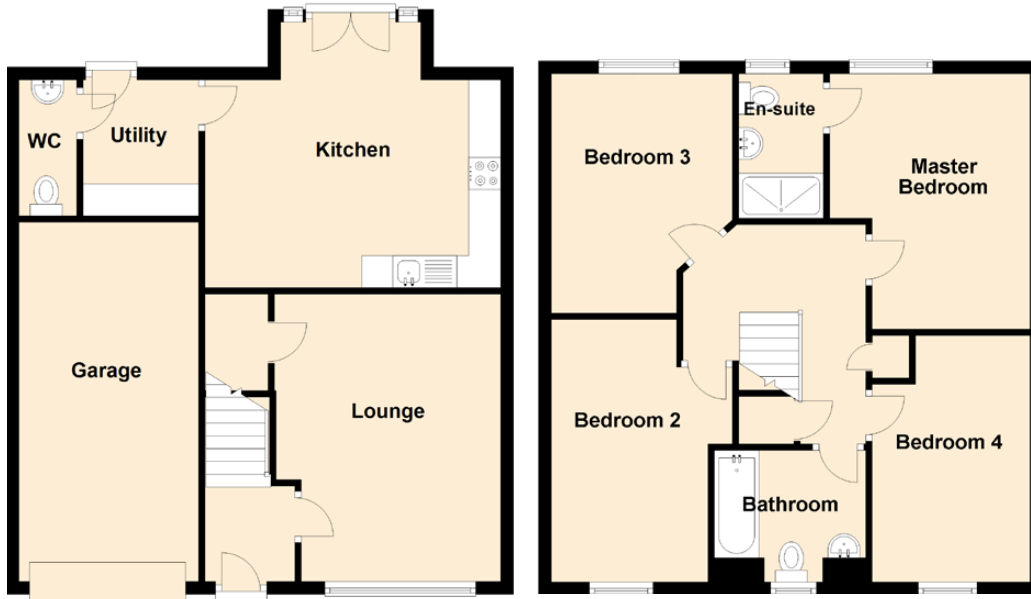


9 Ryndale Drive



Approximate Dimensions (Taken from the widest point)

Kitchen	4.61m (15'1") x 4.14m (13'7")
Lounge	4.48m (14'8") x 3.50m (11'6")
Utility	2.12m (6'11") x 1.80m (5'11")
WC	2.12m (6'11") x 0.90m (2'11")
Master Bedroom	3.98m (13'1") x 3.13m (10'3")
En-suite	2.25m (7'5") x 1.32m (4'4")
Bedroom 2	4.09m (13'5") x 2.83m (9'3")
Bedroom 3	3.73m (12'3") x 2.94m (9'8")
Bedroom 4	3.84m (12'7") x 2.43m (8')
Bathroom	2.37m (7'9") x 2.05m (6'9")

Gross internal floor area (m²): 105m²

EPC Rating: C