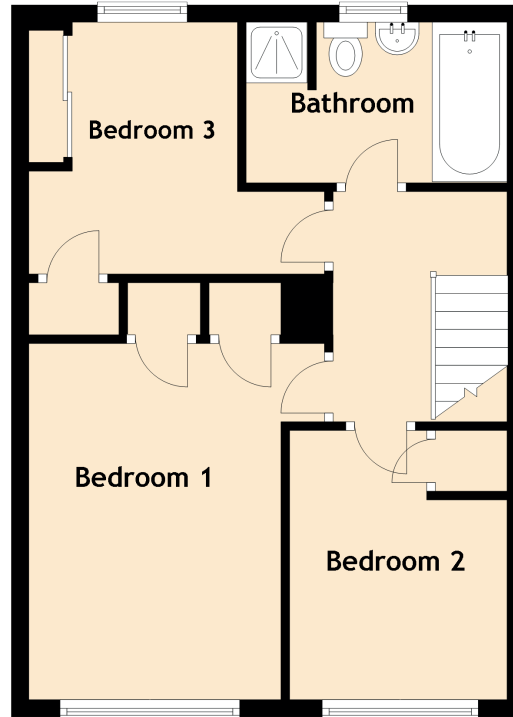
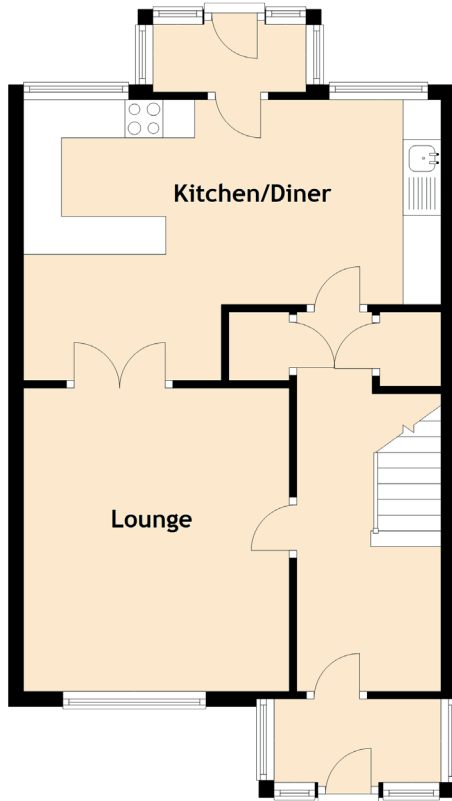


27 McNaughton Walk

KILMARNOCK, KA3 7NE



Approximate Dimensions (Taken from the widest point)

Ground Floor

Lounge 4.00m (13'1") x 3.50m (11'6")
Kitchen/Diner 5.50m (18'1") x 3.70m (12'2")

First Floor

Bedroom 1 4.10m (13'5") x 2.90m (9'6")
Bedroom 2 3.10m (10'2") x 2.50m (8'2")
Bedroom 3 3.40m (11'2") x 2.90m (9'6")
Bathroom 3.10m (10'2") x 1.90m (6'3")