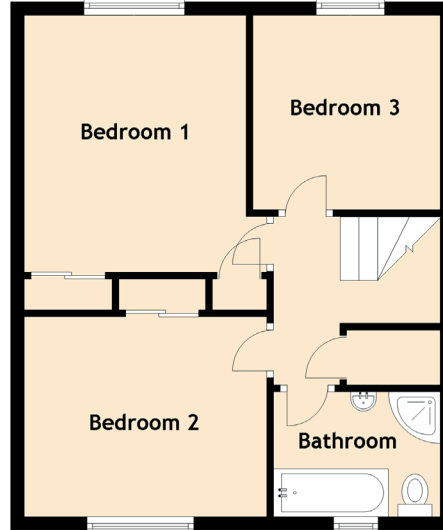
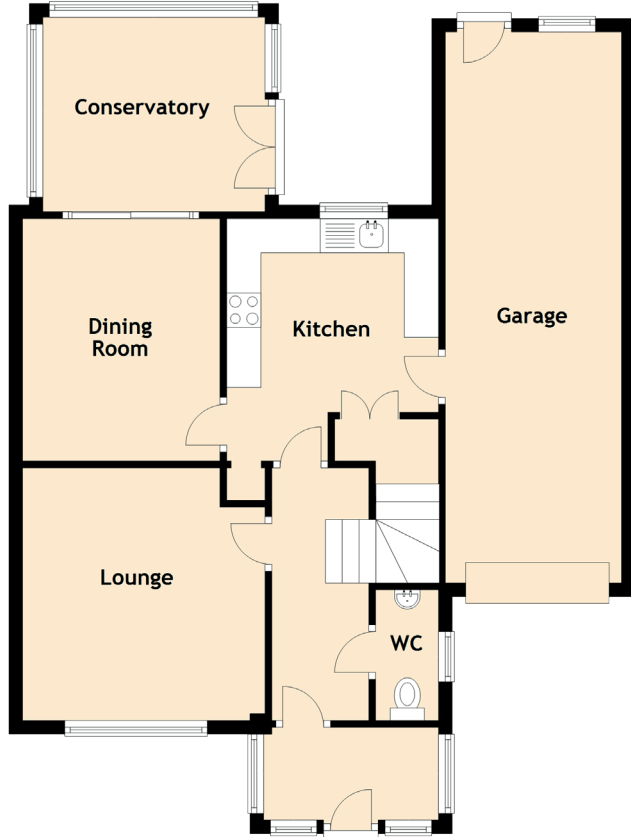


Specifications

& Details



Approximate Dimensions
(Taken from the widest point)

Lounge	3.70m (12'2") x 3.55m (11'8")
Dining Room	3.55m (11'8") x 2.89m (9'6")
Kitchen	3.55m (11'8") x 3.10m (10'2")
Garage	8.07m (26'6") x 2.58m (8'6")
Conservatory	3.25m (10'8") x 2.85m (9'4")
Bedroom 1	3.77m (12'4") x 3.46m (11'4")
Bedroom 2	3.47m (11'5") x 2.90m (9'6")
Bedroom 3	2.85m (9'4") x 2.85m (9'4")
Bathroom	2.60m (8'6") x 1.83m (6')
WC	1.91m (6'3") x 0.92m (3')

Gross internal floor area (m²): 105m²

EPC Rating: C

