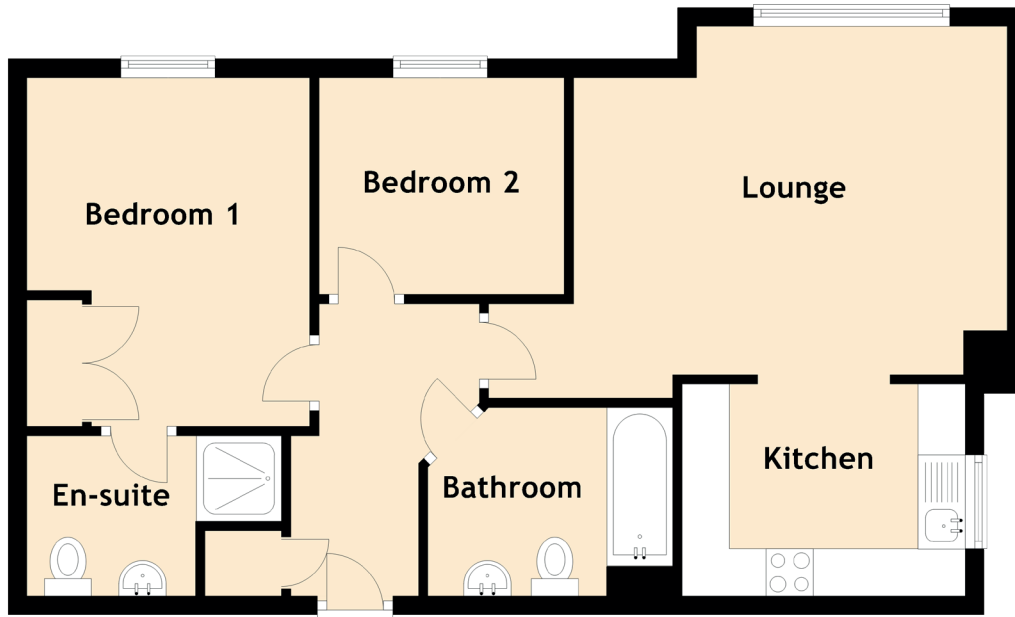


2/3 Milligan Drive

THE WISP, EDINBURGH, EH16 4WJ



Approximate Dimensions
(Taken from the widest point)

Lounge	5.50m (18'1") x 3.70m (12'2")
Kitchen	3.00m (9'10") x 2.25m (7'5")
Bedroom 1	3.70m (12'2") x 3.00m (9'10")
En-suite	2.70m (8'10") x 1.70m (5'7")
Bedroom 2	2.60m (8'6") x 2.30m (7'7")
Bathroom	2.60m (8'6") x 2.00m (6'7")