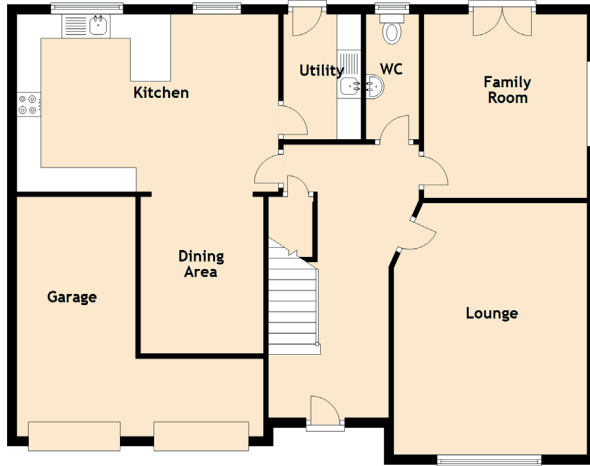


2 Balneil Place

KIRKLISTON, EDINBURGH, EH29 9GN



The Details

Approximate Dimensions
(Taken from the widest point)

GROUND FLOOR

Lounge	5.22m (17'2") x 3.83m (12'7")
Kitchen	5.42m (17'9") x 3.68m (12'1")
Dining Area	3.21m (10'6") x 2.43m (8')
Family Room	3.81m (12'6") x 3.38m (11'1")
Utility	2.60m (8'6") x 1.61m (5'3")
WC	2.60m (8'6") x 1.10m (3'7")
Garage	5.11m (16'9") x 4.97m (16'4")

FIRST FLOOR

Bedroom 1	4.66m (15'3") x 4.02m (13'2")
En-suite 1	2.73m (9') x 1.74m (5'9")
Bedroom 2	3.92m (12'10") x 3.47m (11'5")
En-suite 2	2.70m (8'10") x 1.47m (4'10")
Bedroom 3	4.35m (14'3") x 2.56m (8'5")
Bedroom 4	4.35m (14'3") x 2.68m (8'10")
Bedroom 5	3.69m (12'1") x 3.32m (10'11")
Bathroom	2.70m (8'10") x 2.42m (7'11")

