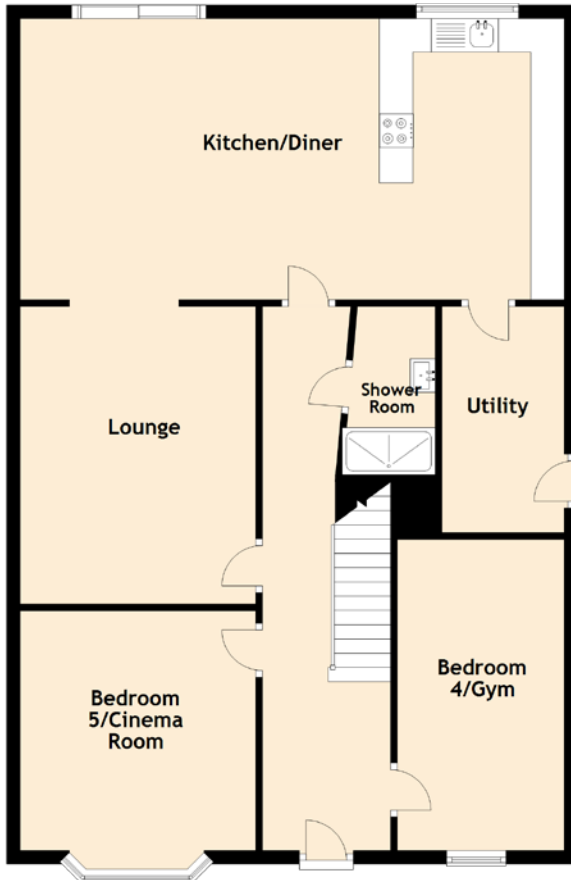


165 Kinghorn Road

BURNTISLAND, FIFE, KY3 9JP



Approximate Dimensions
(Taken from the widest point)

Kitchen/Diner	7.90m (25'11") x 4.18m (13'9")
Lounge	4.42m (14'6") x 3.50m (11'6")
Bedroom 5/ Cinema Room	3.50m (11'6") x 3.50m (11'6")
Bedroom 4/Gym	4.85m (15'11") x 2.44m (8')
Utility	3.36m (11') x 1.63m (5'4")
Shower Room	2.50m (8'2") x 1.38m (4'6")
Bedroom 1	4.63m (15'2") x 3.58m (11'9")
En-suite	2.61m (8'7") x 1.29m (4'3")
Bedroom 2	4.12m (13'6") x 3.50m (11'6")
Bedroom 3	3.50m (11'6") x 3.50m (11'6")
Office	1.88m (6'2") x 1.72m (5'8")
Bathroom	2.63m (8'8") x 1.99m (6'6")

Gross internal floor area (m²): 186m²

EPC Rating: C