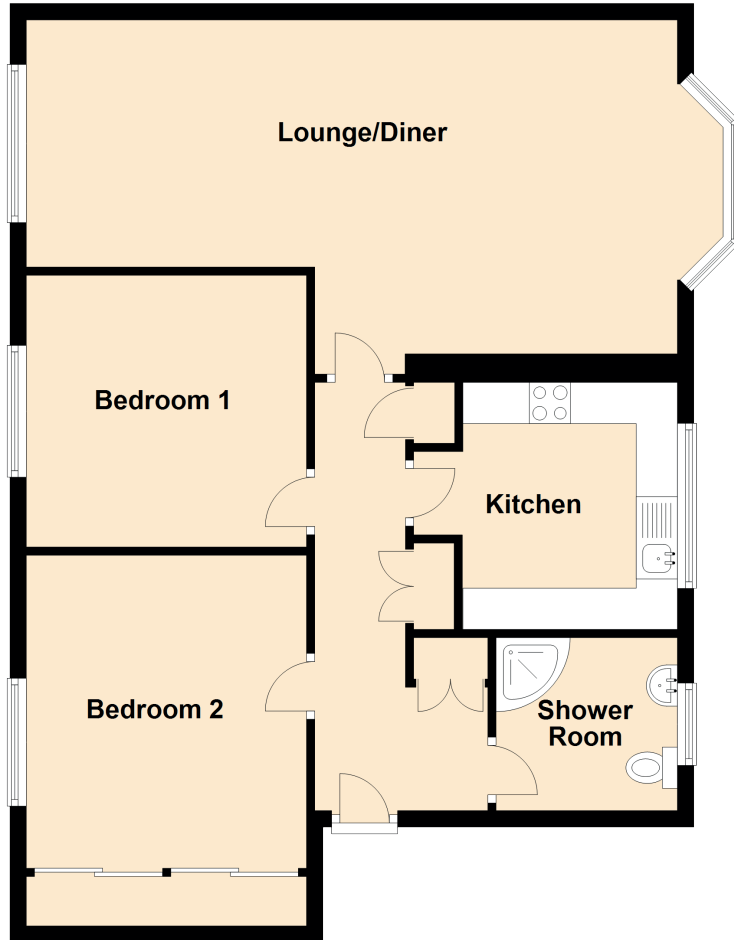


# Flat 33 Weymouth Court

177 WEYMOUTH DRIVE, KELVINDALE, GLASGOW, G12 0EP



Approximate Dimensions (Taken from the widest point)

Lounge/Diner	7.90m (25'11") x 4.30m (14'1")
Kitchen	3.20m (10'6") x 3.00m (9'10")
Bedroom 1	3.40m (11'2") x 3.30m (10'10")
Bedroom 2	3.80m (12'6") x 3.40m (11'2")
Shower Room	2.20m (7'3") x 2.10m (6'11")