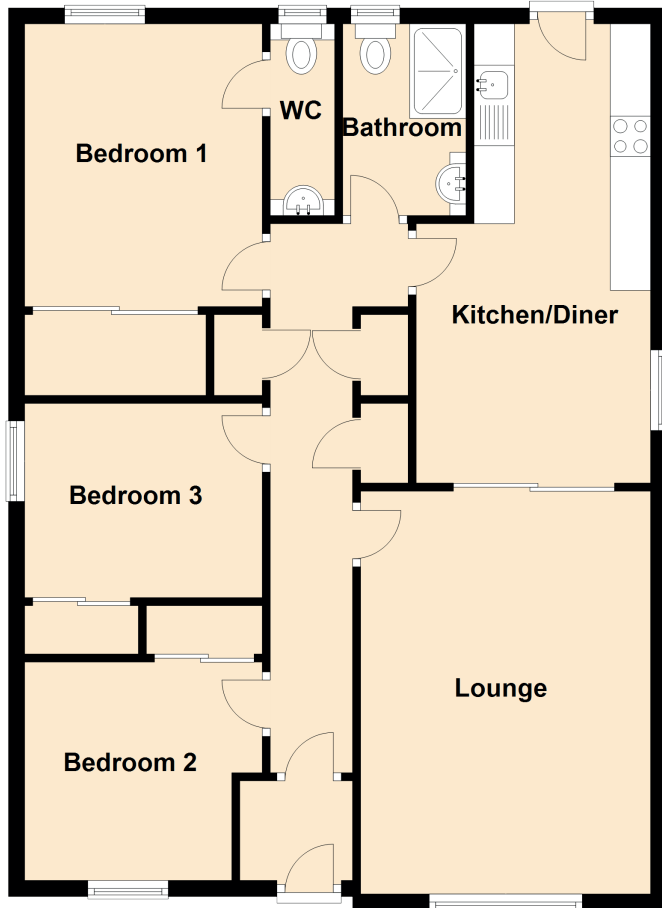


10 Onslow Street

CRAIGSHILL, LIVINGSTON, WEST LoTHIAN, EH54 5HR



Approximate Dimensions (Taken from the widest point)

| | |
|---------------|--------------------------------|
| Lounge | 5.00m (16'5") x 3.60m (11'10") |
| Kitchen/Diner | 5.70m (18'8") x 2.91m (9'7") |
| Bedroom 1 | 3.51m (11'6") x 2.95m (9'8") |
| Bedroom 2 | 2.95m (9'8") x 2.71m (8'11") |
| Bedroom 3 | 2.95m (9'8") x 2.41m (7'11") |
| Bathroom | 2.38m (7'10") x 1.53m (5') |
| WC | 2.38m (7'10") x 0.80m (2'7") |