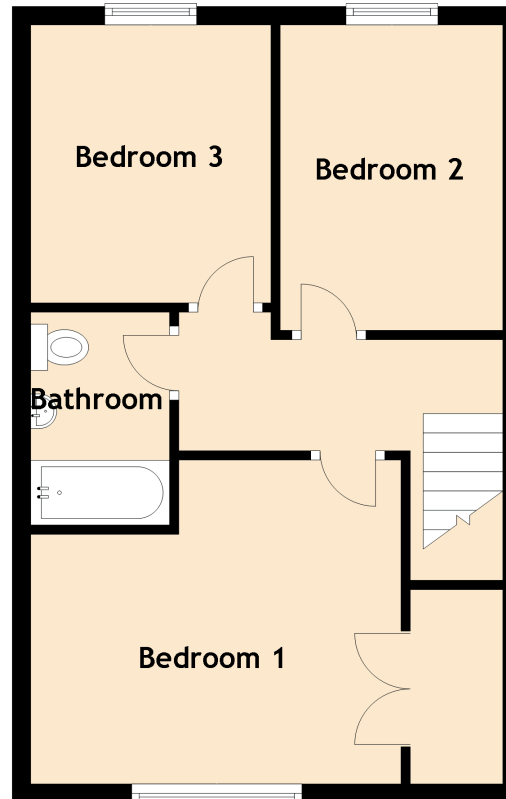
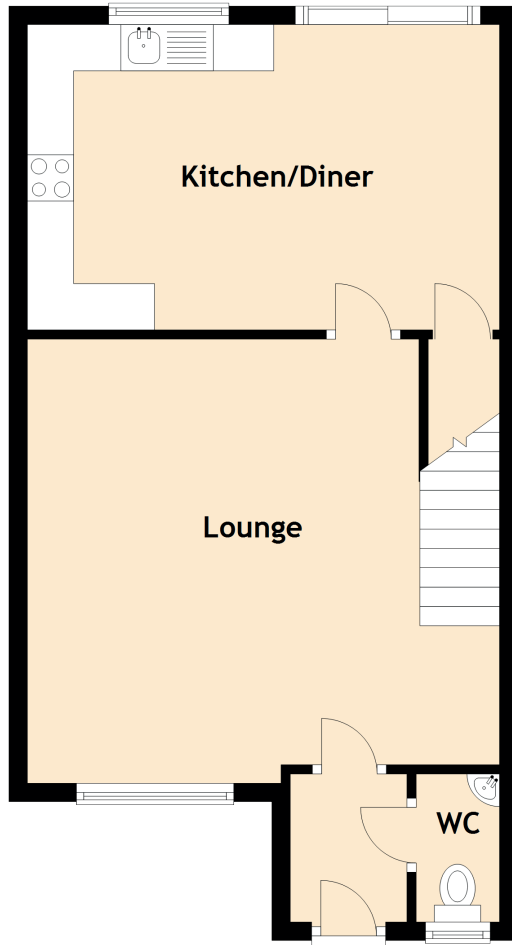


2 Pochard

LESMAHAGOW, LANARK, ML11 0GW



Approximate Dimensions
(Taken from the widest point)

Lounge	5.10m (16'9") x 4.80m (15'9")
Kitchen/Diner	5.10m (16'9") x 3.30m (10'10")
Bedroom 1	4.00m (13'1") x 3.50m (11'6")
Bedroom 2	3.30m (10'10") x 2.50m (8'2")
Bedroom 3	3.00m (9'10") x 2.60m (8'6")
Bathroom	2.30m (7'7") x 1.50m (4'11")
WC	1.60m (5'3") x 0.90m (2'11")

Gross internal floor area (m²): 88m²

EPC Rating: C