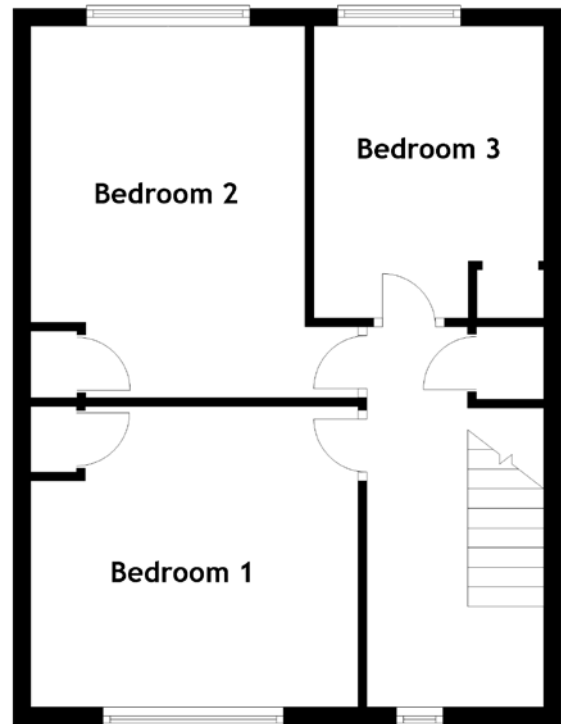
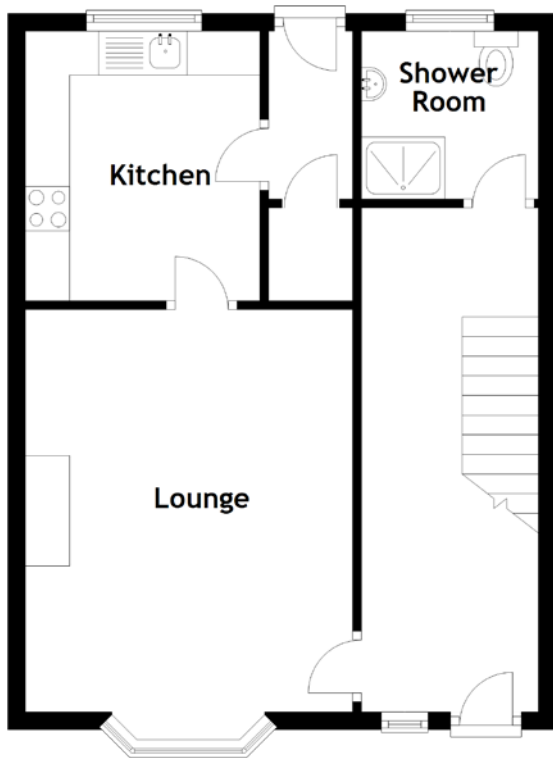


FLOOR PLAN, DIMENSIONS & MAP



Approximate Dimensions
(Taken from the widest point)

Lounge 4.55m (14'11") x 3.70m (12'2")
 Kitchen 3.05m (10') x 2.65m (8'8")
 Shower Room 2.00m (6'7") x 2.00m (6'7")

Bedroom 1 3.70m (12'2") x 3.40m (11'2")
 Bedroom 2 4.20m (13'9") x 3.70m (12'2")
 Bedroom 3 3.30m (10'10") x 3.00m (9'10")

Gross internal floor area (m²): 90m²
 EPC Rating: C

