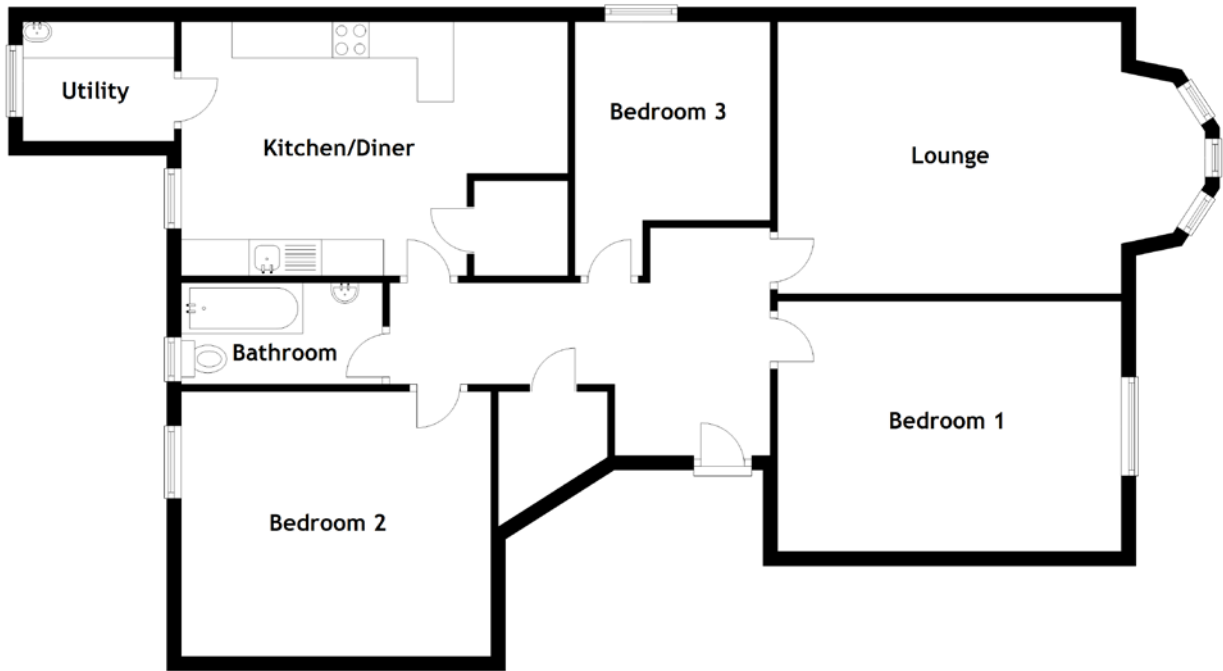


FLOOR PLAN, DIMENSIONS & MAP



Approximate Dimensions (Taken from the widest point)

Lounge 5.91m (19'5") x 3.76m (12'4")
Kitchen/Diner 5.34m (17'6") x 3.51m (11'6")
Utility 2.09m (6'10") x 1.65m (5'5")
Bedroom 1 4.75m (15'7") x 3.46m (11'4")

Bedroom 2 4.28m (14'1") x 3.66m (12')
Bedroom 3 2.75m (9') x 2.70m (8'10")
Bathroom 2.78m (9'1") x 1.40m (4'7")

Gross internal floor area (m²): 102m²
EPC Rating: C

