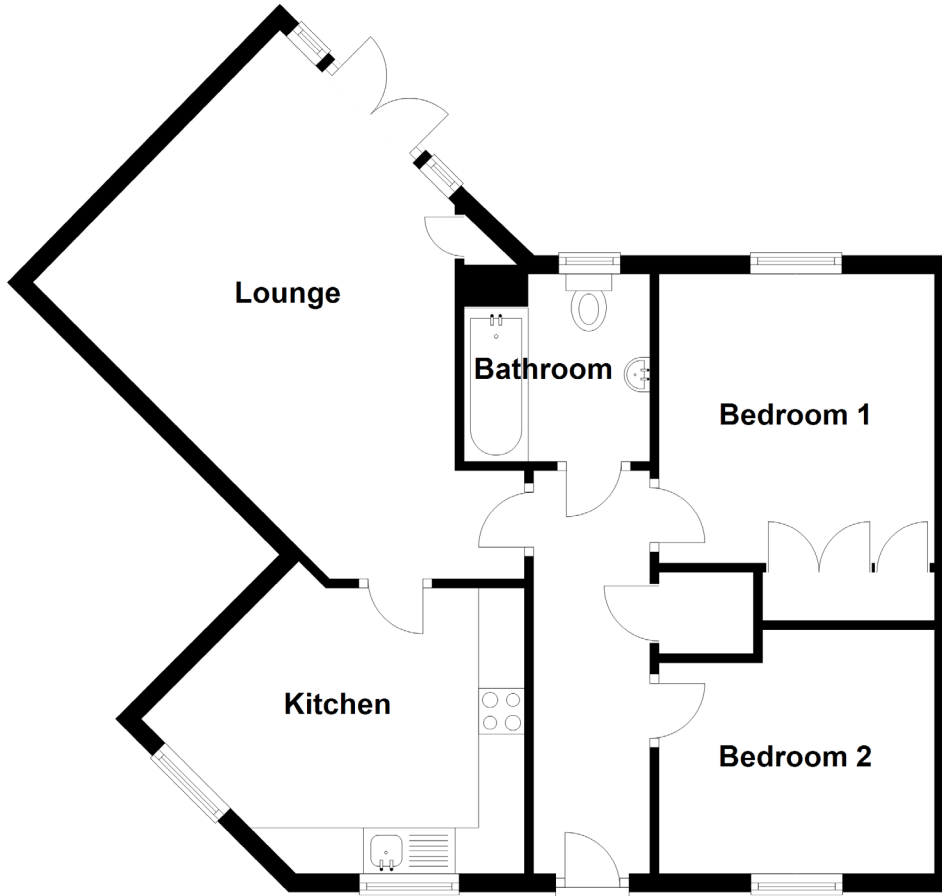


8 Doctor Gracie Drive

PRESTONPANS, EH32 9GQ



Approximate Dimensions (Taken from the widest point)

Lounge	3.86m (12'8") x 3.75m (12'4")
Kitchen	4.15m (13'7") x 3.12m (10'3")
Bedroom 1	3.16m (10'4") x 3.01m (9'11")
Bedroom 2	3.01m (9'11") x 2.66m (8'9")
Bathroom	2.05m (6'9") x 2.03m (6'8")

Gross internal floor area (m²): 60m²

EPC Rating: C