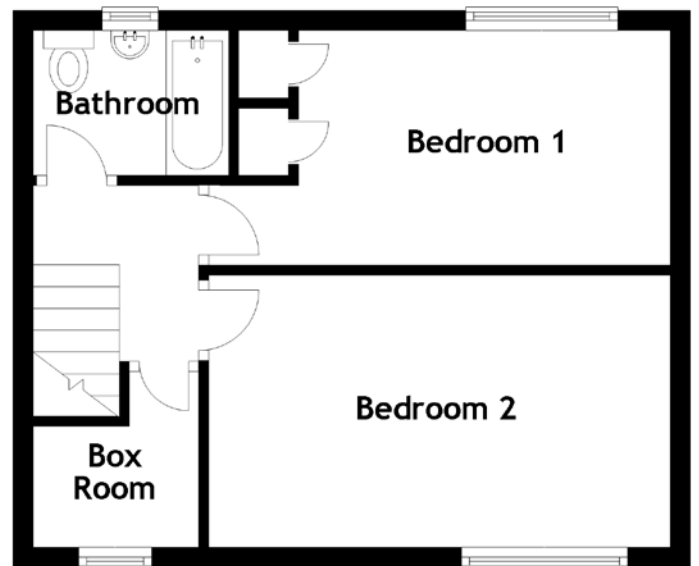
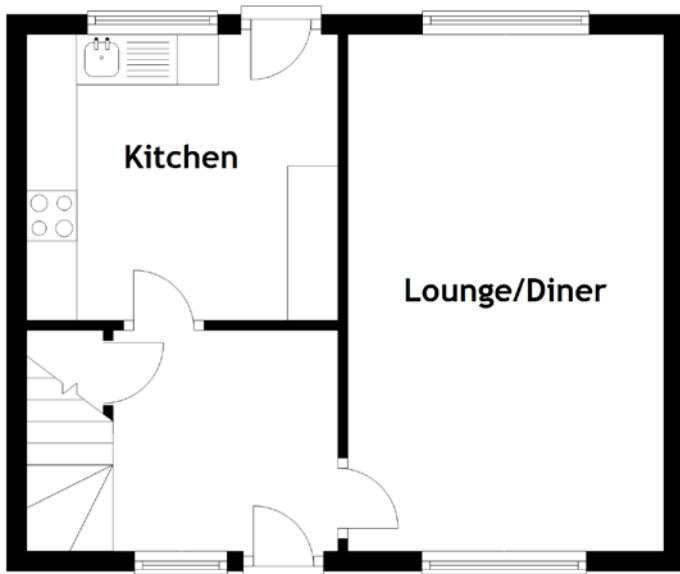


FLOOR PLAN, DIMENSIONS & MAP



Approximate Dimensions (Taken from the widest point)

Lounge/Diner	5.15m (16'11") x 3.15m (10'4")
Kitchen	3.10m (10'2") x 2.85m (9'4")
Bedroom 1	2.65m (8'8") x 2.00m (6'7")
Bedroom 2	4.60m (15'1") x 2.80m (9'2")
Box Room	1.90m (6'3") x 1.85m (6'1")
Bathroom	1.95m (6'5") x 1.65m (5'5")

Gross internal floor area (m²): 74m²

EPC Rating: E

Extras (Included in the sale): Carpets and floor coverings, light fixtures and fittings, curtains and blinds.

