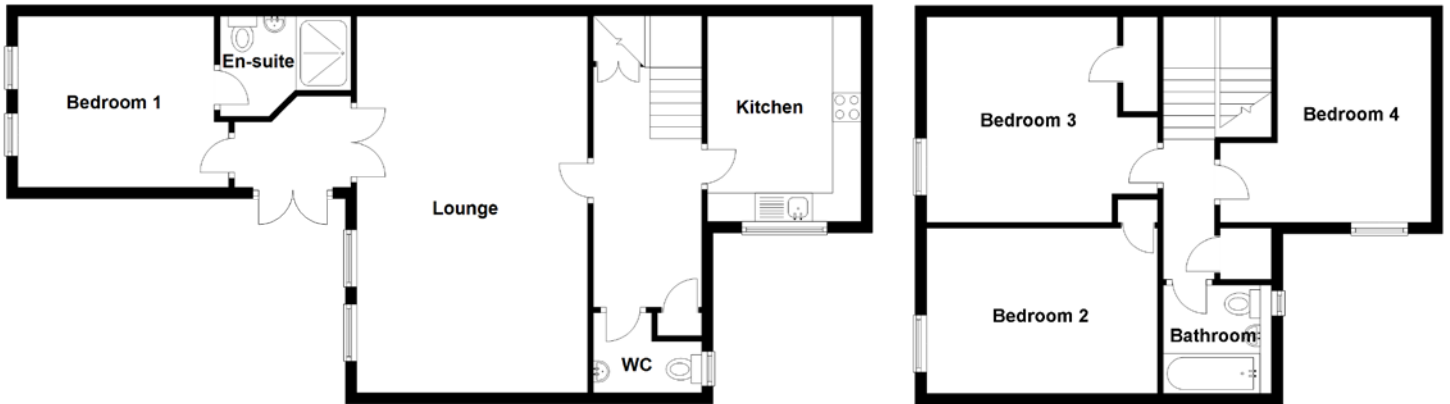


FLOOR PLAN, DIMENSIONS & MAP



Approximate Dimensions
(Taken from the widest point)

Lounge	6.60m (21'8") x 4.05m (13'3")
Kitchen	3.60m (11'10") x 2.70m (8'10")
WC	1.90m (6'3") x 1.40m (4'7")
Bedroom 1	3.45m (11'4") x 3.00m (9'10")
En-suite	2.30m (7'7") x 1.75m (5'9")
Bedroom 2	4.05m (13'3") x 2.90m (9'6")

Bedroom 3	4.10m (13'5") x 3.60m (11'10")
Bedroom 4	3.70m (12'2") x 3.60m (11'10")
Bathroom	1.90m (6'3") x 1.90m (6'3")

Gross internal floor area (m²): 117m²
EPC Rating: D

Extras (Included in the sale): Carpets and floor coverings, light fixtures and fittings.

