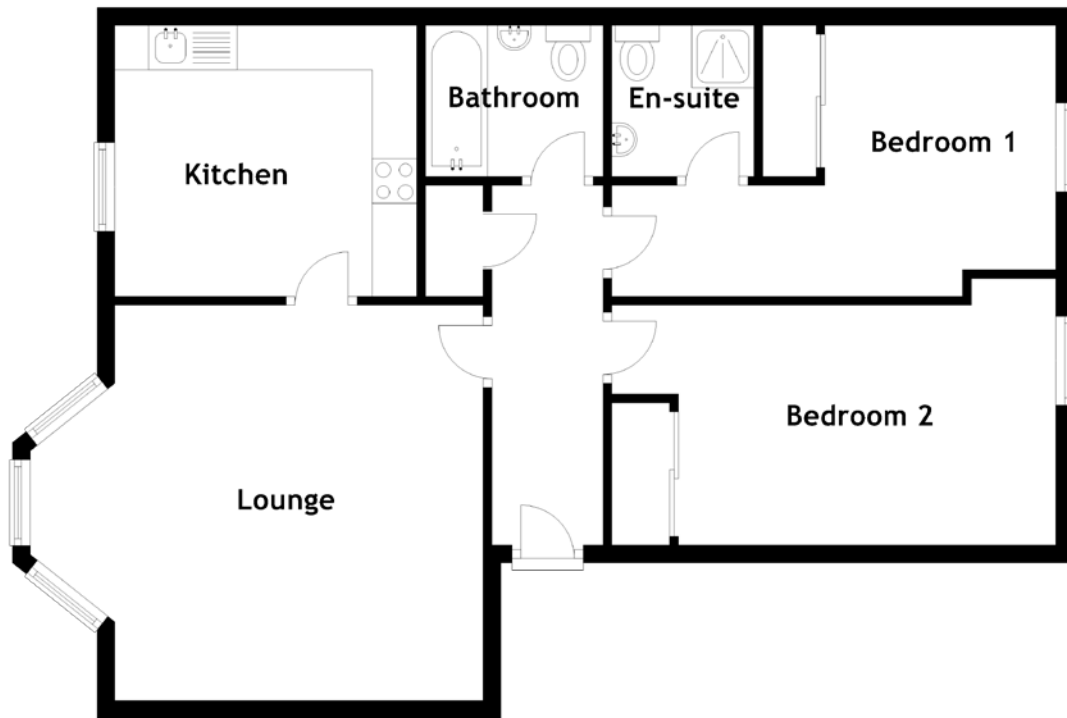


FLOOR PLAN, DIMENSIONS & MAP



Approximate Dimensions
(Taken from the widest point)

Kitchen 3.40m (11'2") x 3.05m (10')
Lounge 5.10m (16'9") x 4.45m (14'7")
Bedroom 1 5.00m (16'5") x 3.05m (10')

En-suite 1.70m (5'7") x 1.60m (5'3")
Bedroom 2 5.00m (16'5") x 3.00m (9'10")
Bathroom 2.00m (6'7") x 1.70m (5'7")

Gross internal floor area (m²): 71m²
EPC Rating: C

