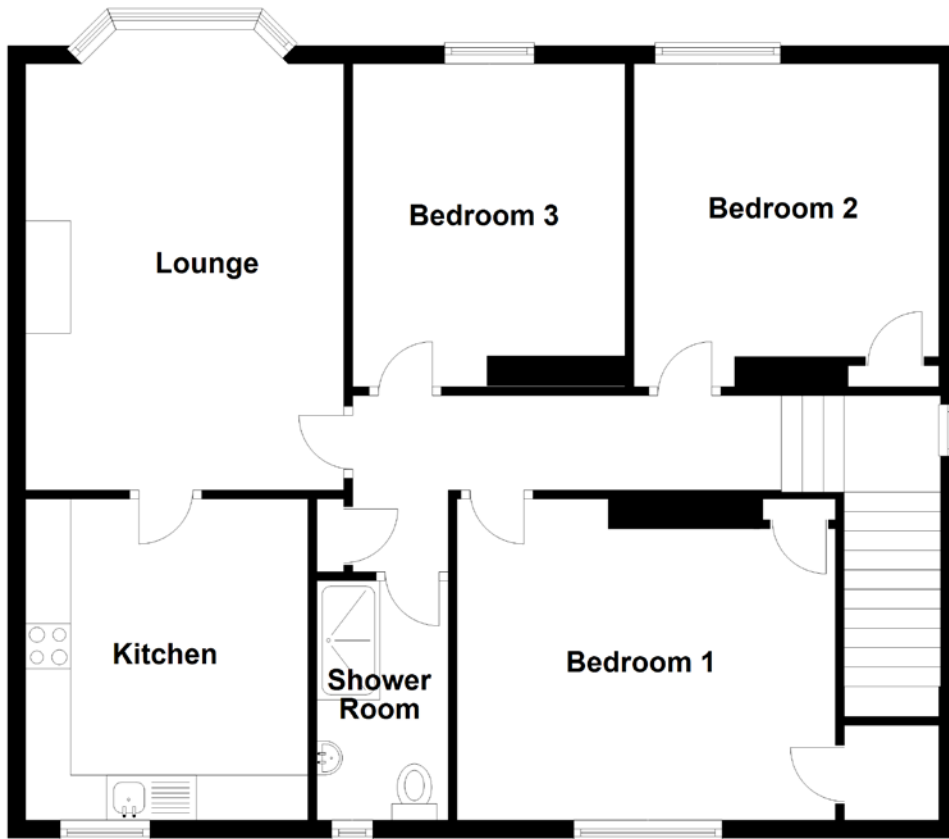


FLOOR PLAN, DIMENSIONS & MAP



Approximate Dimensions (Taken from the widest point)

Lounge 5.12m (16'10") x 3.54m (11'7")
Kitchen 3.57m (11'9") x 3.14m (10'4")
Bedroom 1 4.21m (13'10") x 3.56m (11'8")
Bedroom 2 3.39m (11'1") x 3.26m (10'8")

Bedroom 3 3.59m (11'9") x 3.03m (9'11")
Shower Room 2.66m (8'9") x 1.46m (4'9")

Gross internal floor area (m²): 86m²

EPC Rating: C

