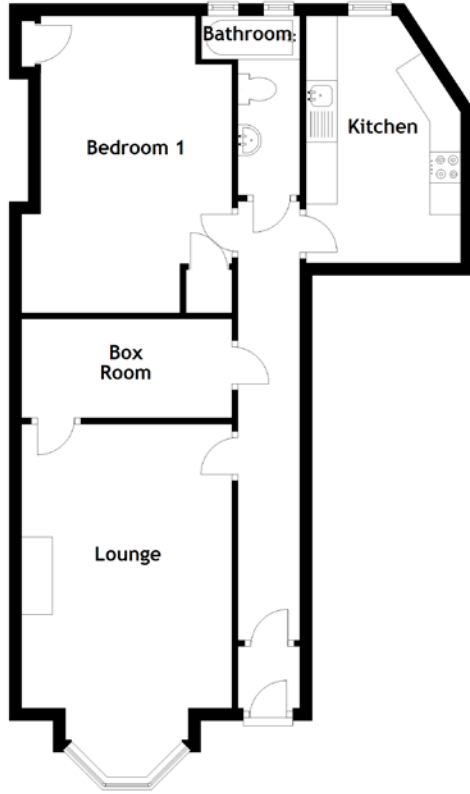
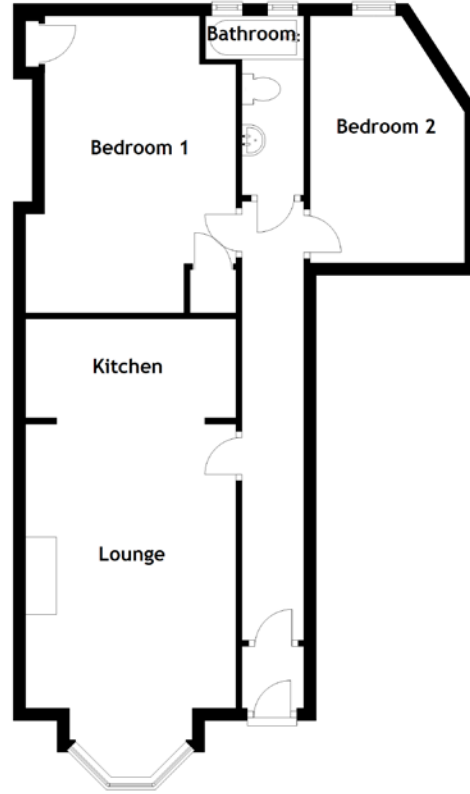


FLOOR PLAN, DIMENSIONS & MAP

Existing Plan



Proposed Plan



Approximate Dimensions (Taken from the widest point)

Lounge	5.70m (18'8") x 3.40m (11'2")
Box Room	3.40m (11'2") x 1.60m (5'3")
Kitchen	4.00m (13'1") x 2.50m (8'2")
Bedroom 1	4.80m (15'9") x 2.90m (9'6")
Bathroom	2.90m (9'6") x 1.80m (5'11")

Approximate Dimensions (Taken from the widest point)

Lounge	5.70m (18'8") x 3.40m (11'2")
Kitchen	3.40m (11'2") x 1.60m (5'3")
Bedroom 1	4.80m (15'9") x 2.90m (9'6")
Bedroom 2	4.00m (13'1") x 2.50m (8'2")
Bathroom	4.00m (13'1") x 2.50m (8'2")

Gross internal floor area (m²): 73m² | EPC Rating: C

