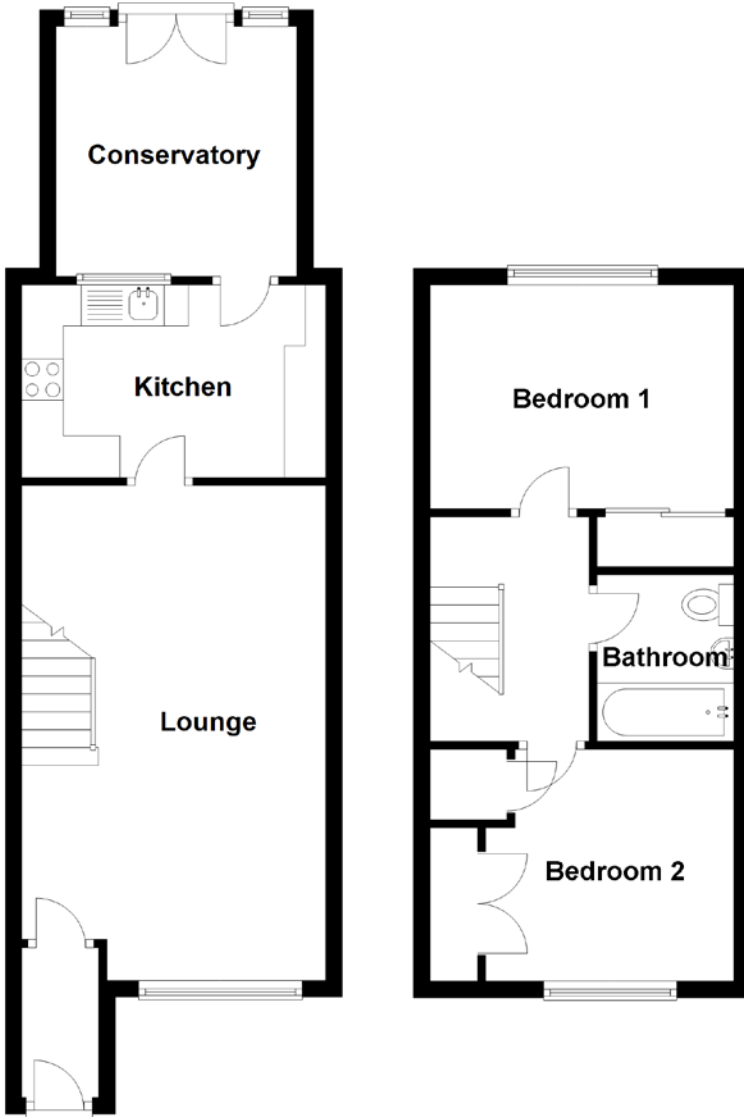


FLOOR PLAN, DIMENSIONS & MAP



Approximate Dimensions
(Taken from the widest point)

Kitchen	3.67m (12') x 2.33m (7'8")
Lounge	5.98m (19'7") x 3.67m (12')
Conservatory	3.02m (9'11") x 2.91m (9'6")
Bedroom 2	3.00m (9'10") x 2.80m (9'2")
Bathroom	2.01m (6'7") x 1.65m (5'5")
Bedroom 1	3.67m (12') x 2.70m (8'10")

Gross internal floor area (m²): 72m²

EPC Rating: C

