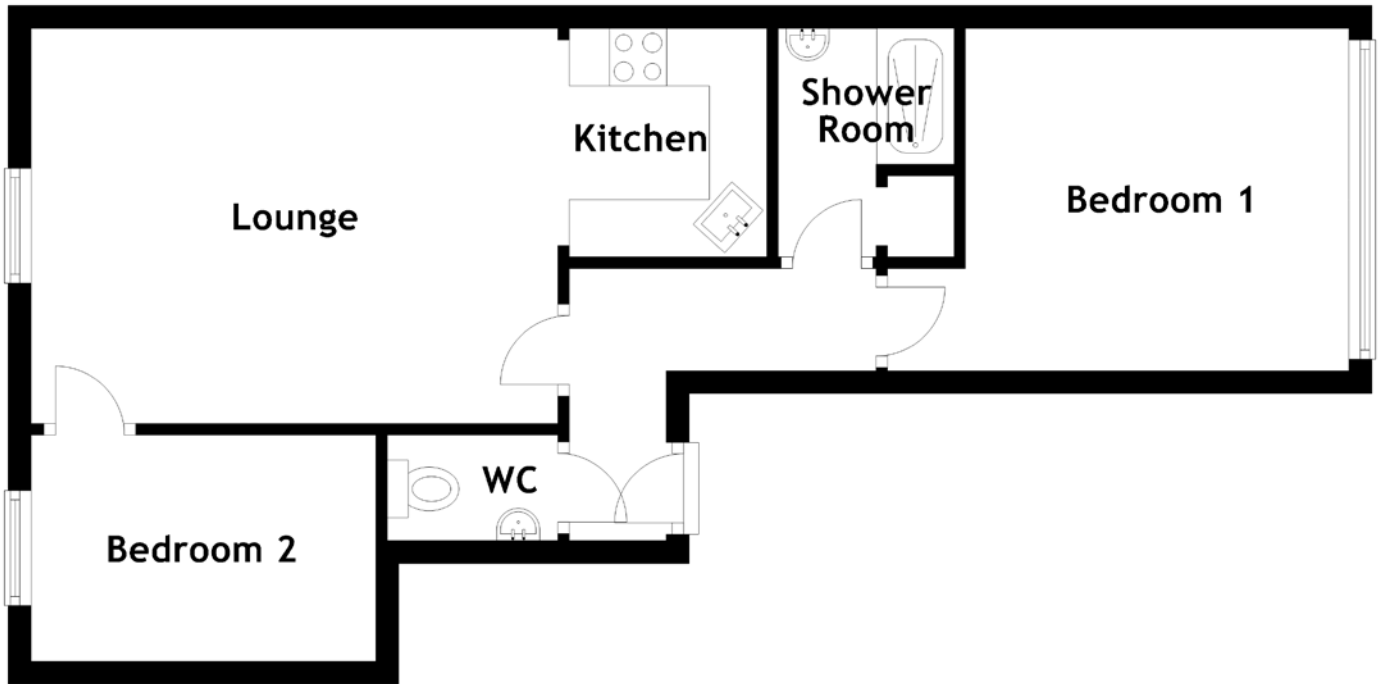


FLOOR PLAN, DIMENSIONS & MAP



Approximate Dimensions
(Taken from the widest point)

Lounge 6.46m (21'2") x 3.44m (11'3")
 Kitchen 1.99m (6'6") x 1.72m (5'8")
 Shower Room 1.99m (6'6") x 1.53m (5')

WC 1.49m (4'11") x 0.92m (3')
 Bedroom 1 4.02m (13'2") x 2.98m (9'9")
 Bedroom 2 2.90m (9'6") x 1.97m (6'6")

Gross internal floor area (m²): 47m²
 EPC Rating: C

