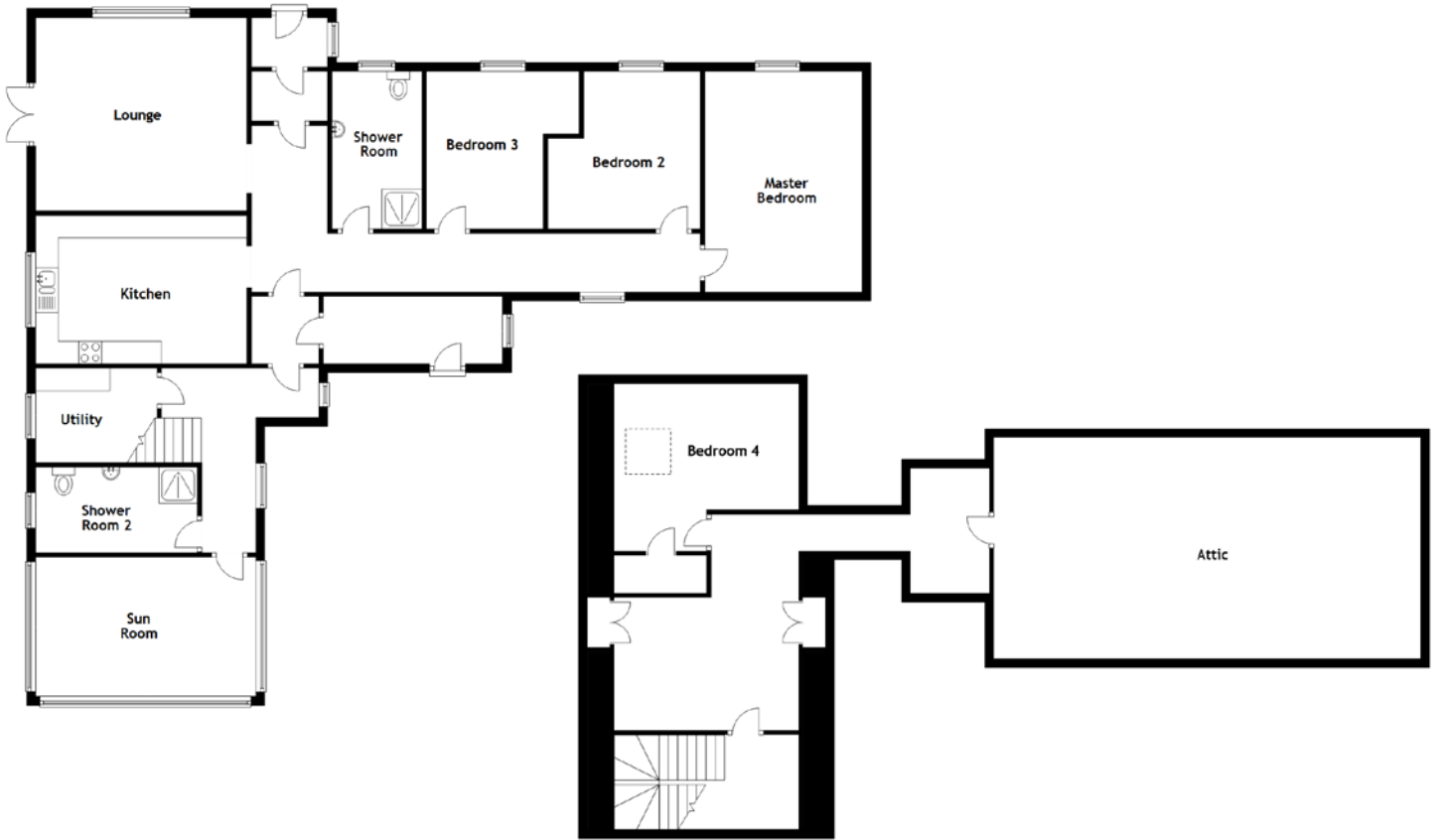


FLOOR PLAN, DIMENSIONS & MAP



Approximate Dimensions
(Taken from the widest point)

Lounge	4.70m (15'5") x 4.30m (14'1")
Kitchen	4.70m (15'5") x 3.30m (10'10")
Utility	2.70m (8'10") x 2.10m (6'11")
Sun Room	4.80m (15'9") x 3.10m (10'2")
Shower Room	3.50m (11'6") x 2.00m (6'7")

Shower Room 2	3.60m (11'10") x 1.90m (6'3")
Master Bedroom	4.70m (15'5") x 3.50m (11'6")
Bedroom 2	3.50m (11'6") x 3.40m (11'2")
Bedroom 3	3.50m (11'6") x 3.40m (11'2")
Bedroom 4	4.10m (13'5") x 3.70m (12'2")
Attic	9.50m (31'2") x 4.90m (16'1")

Gross internal floor area (m²): 206m² | EPC Rating: C

