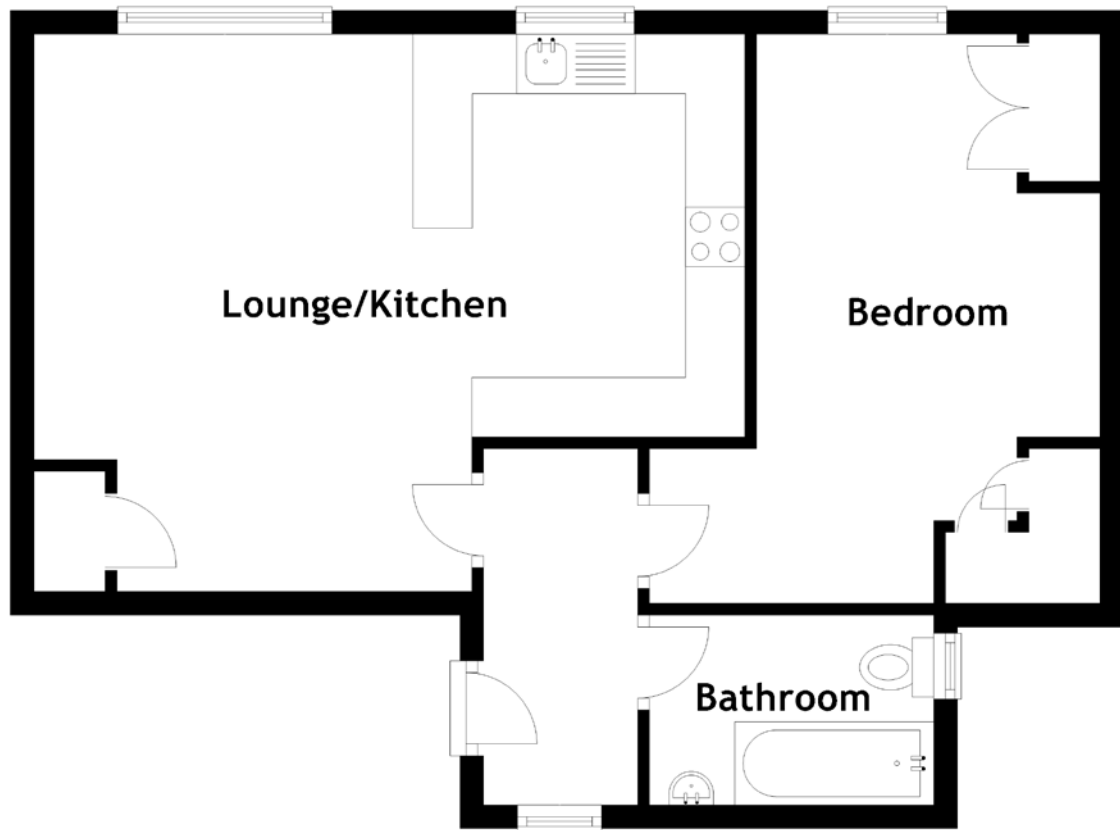


# FLOOR PLAN, DIMENSIONS & MAP



Approximate Dimensions  
(Taken from the widest point)

Lounge/Kitchen	6.00m (19'8") x 3.40m (11'2")
Bedroom	4.80m (15'9") x 3.80m (12'6")
Bathroom	2.40m (7'10") x 1.60m (5'3")

Gross internal floor area (m<sup>2</sup>): 49m<sup>2</sup>  
EPC Rating: D

Extras (Included in the sale): Integrated appliances and floor coverings.

