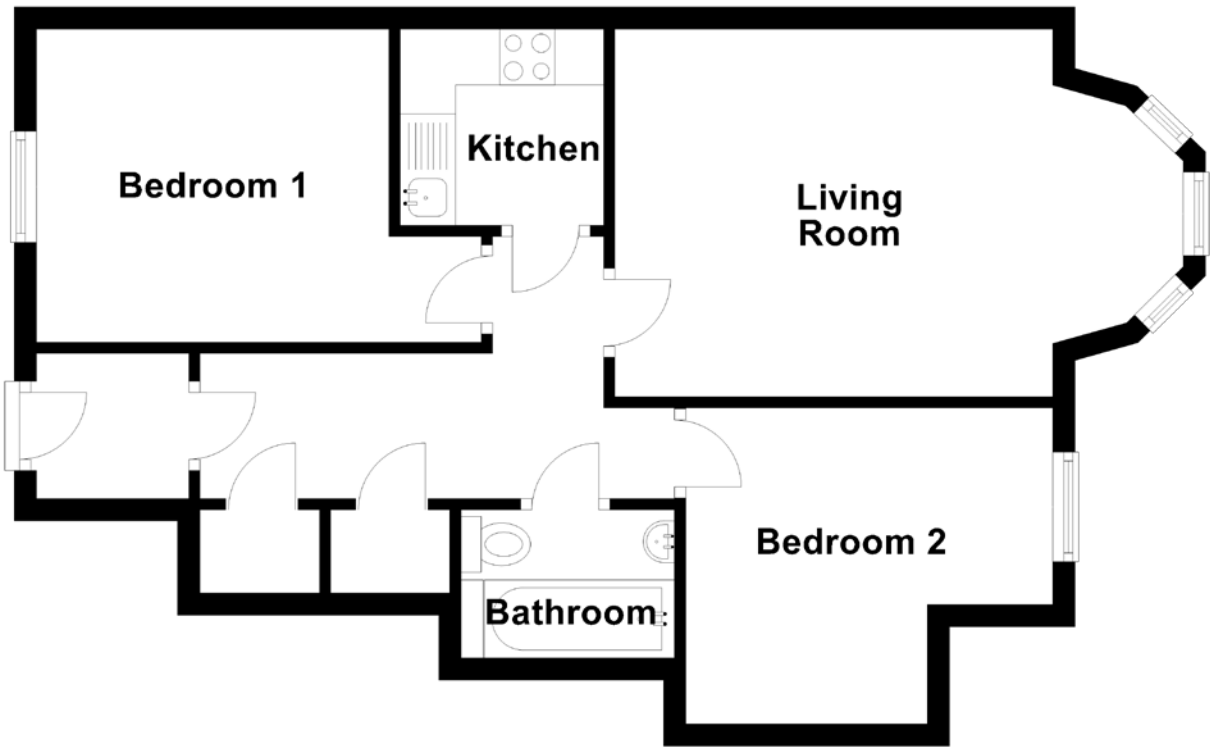


FLOOR PLAN, DIMENSIONS & MAP



Approximate Dimensions (Taken from the widest point)

Living Room 5.11m (16'9") x 3.30m (10'10")
Kitchen 1.83m (6') x 1.76m (5'9")
Bedroom 1 4.00m (13'1") x 2.81m (9'3")

Bedroom 2 3.30m (10'10") x 2.84m (9'4")
Bathroom 1.92m (6'4") x 1.33m (4'4")

Gross internal floor area (m²): 51m²
EPC Rating: C

