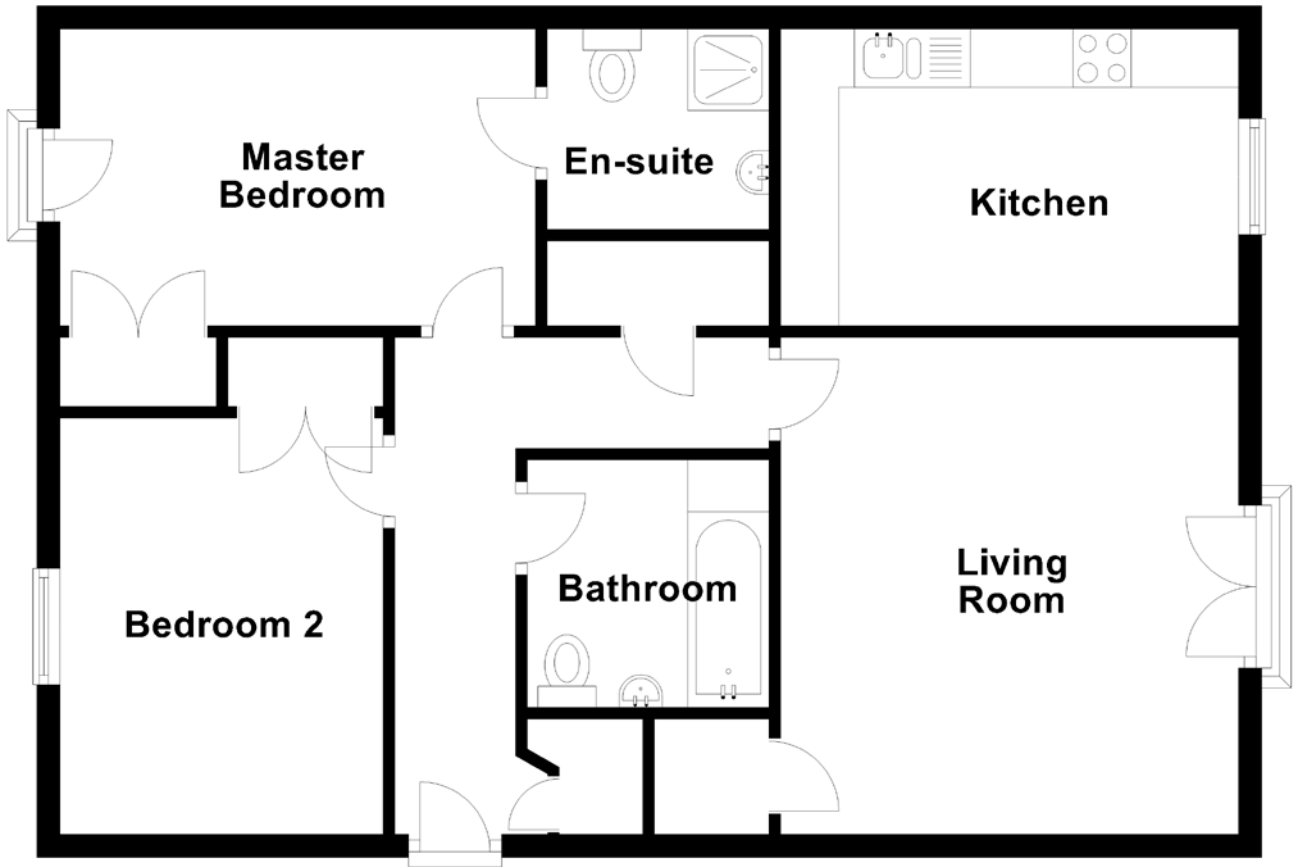


FLOOR PLAN, DIMENSIONS & MAP



Approximate Dimensions
(Taken from the widest point)

Living Room 4.27m (14') x 3.95m (13')
 Kitchen 3.94m (12'11") x 2.55m (8'4")
 Master Bedroom 4.09m (13'5") x 2.60m (8'6")

En-suite 1.91m (6'3") x 1.72m (5'8")
 Bedroom 2 3.58m (11'9") x 2.78m (9'1")
 Bathroom 2.13m (7') x 2.08m (6'10")

Gross internal floor area (m²): 70m²
 EPC Rating: B

