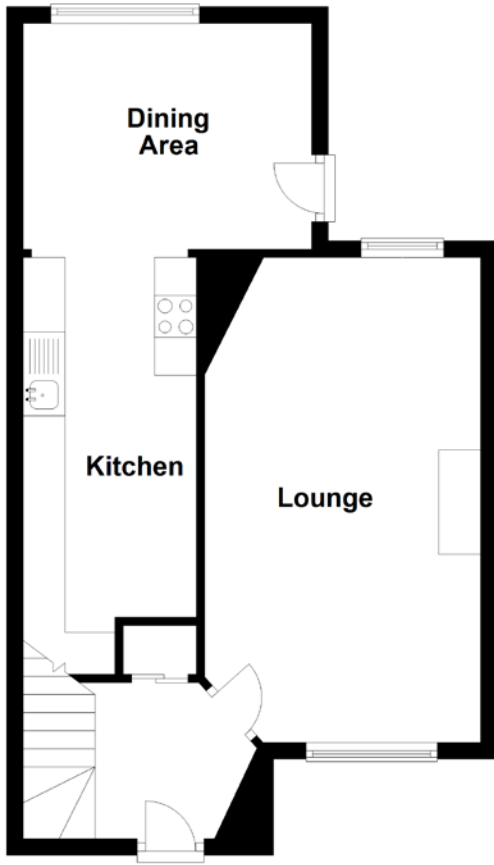


FLOOR PLAN, DIMENSIONS & MAP



Approximate Dimensions (Taken from the widest point)

Lounge	5.80m (19') x 3.30m (10'10")
Kitchen	4.99m (16'4") max x 2.20m (7'3")
Dining Area	3.45m (11'4") x 2.70m (8'10")
Bedroom 1	4.60m (15'1") x 2.85m (9'4")
Bedroom 2	3.55m (11'8") x 2.85m (9'4")

Shower Room

1.90m (6'3") x 1.85m (6'1")

Gross internal floor area (m²): 74m²
EPC Rating: C

Extras (included in the sale): Furniture and freestanding appliances may be available by separate negotiation.

